

# Introduction to surgery

Prof Oluwadiya Kehinde

[www.oluwadiya.com](http://www.oluwadiya.com)

# What is surgery?

- Surgery is the medical specialty that uses operative manual and instrumental techniques on patients to investigate and treat pathological conditions.
- Derived from Latin word, *chirurgiae* which means "hand work"
- Aim is to help improve bodily function or appearance

# Word Play

- The act of performing surgery is called *surgical procedure*
- It may also be referred to as an *operation*
- Thus *operation* is synonymous with *surgery*
- *Operating.....* is equivalent to *performing surgery*



# Word Play

- The word *Surgical*...is the adjective meaning *pertaining to surgery*
- *Surgical ward*: Wards in which surgical patients are admitted
- *Surgical instruments*: Instruments used for surgery

# Who is a surgeon?

- The surgeon is a medical practitioner who performs surgical operations
- Usually, the person is a specialist
- There are many types of surgeons depending on their sub-specialization



# Surgery Subspecialties

- General surgery
- Orthopaedic surgery
- Neurosurgery
- Ophthalmology
- Otolaryngology

# Surgery Subspecialties

- Urology
- Cardiothoracic surgery
- Paediatric surgery
- Plastic surgery
- Trauma surgery
- Oral and maxillofacial surgery

# General surgery

- Colorectal surgery
- Vascular surgery
- Transplant surgery
- Breast surgery
- Surgical oncology
- Endocrine surgery



# Types of surgical procedures

- Broadly divided into two:
  - i. Elective surgery
  - ii. Emergency surgery

# Types of surgical procedures

- An elective surgery is done to correct a non-life-threatening condition.
- Usually done either at the behest of the patients or their relatives
- But timing is subjected to availability of time, facilities and patient's fitness
- Have the best outcomes

# Types of surgical procedures

- Emergency surgeries must be done quickly to save lives, limbs, or preserve functions.
- They must be done even when conditions are not optimal
- But even then, certain conditions need to be fulfilled before they are done.
- Outcomes may not be as satisfactory as elective surgeries

# Other terminologies

- *Exploratory surgery*: Done when a surgeon is not sure of the diagnosis. It is done to aid or confirm a diagnosis
- *Biopsy*: The surgical removal of a small portion of tissue for diagnosis

# Other terminologies

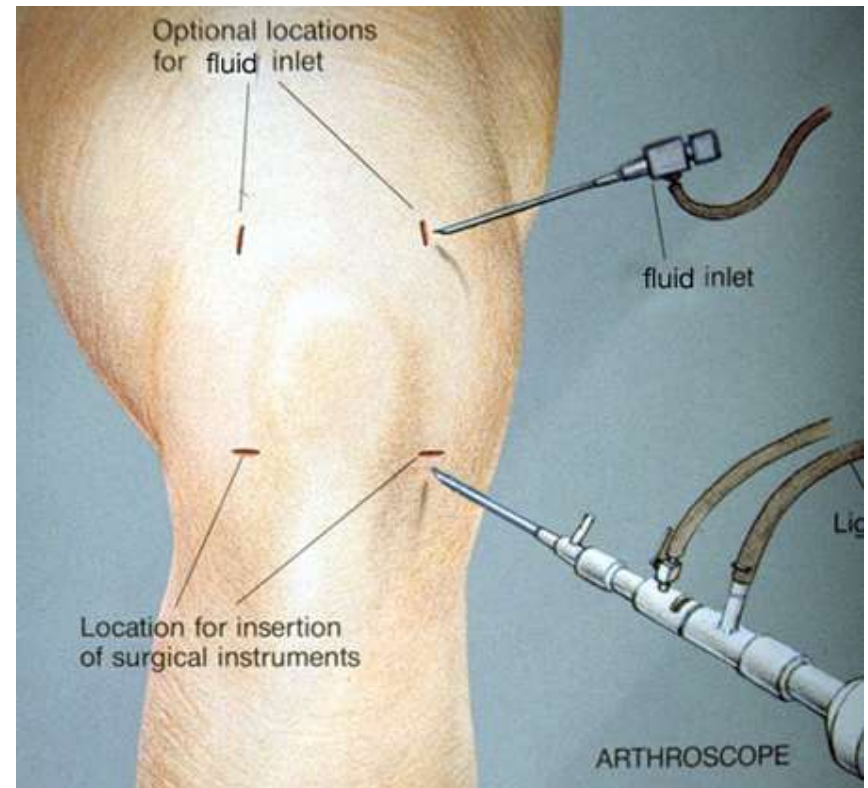
- *Biopsy*: The surgical removal of part of, or the whole tissue or organ for diagnosis. They are of two types:
  - i. Incision biopsy*: When only part of a tissue or organ is removed. They are done when the growth is considered malignant
  - ii. Excision biopsy*: When the whole tissue is removed. It is done when the condition is considered benign

# Other terminologies

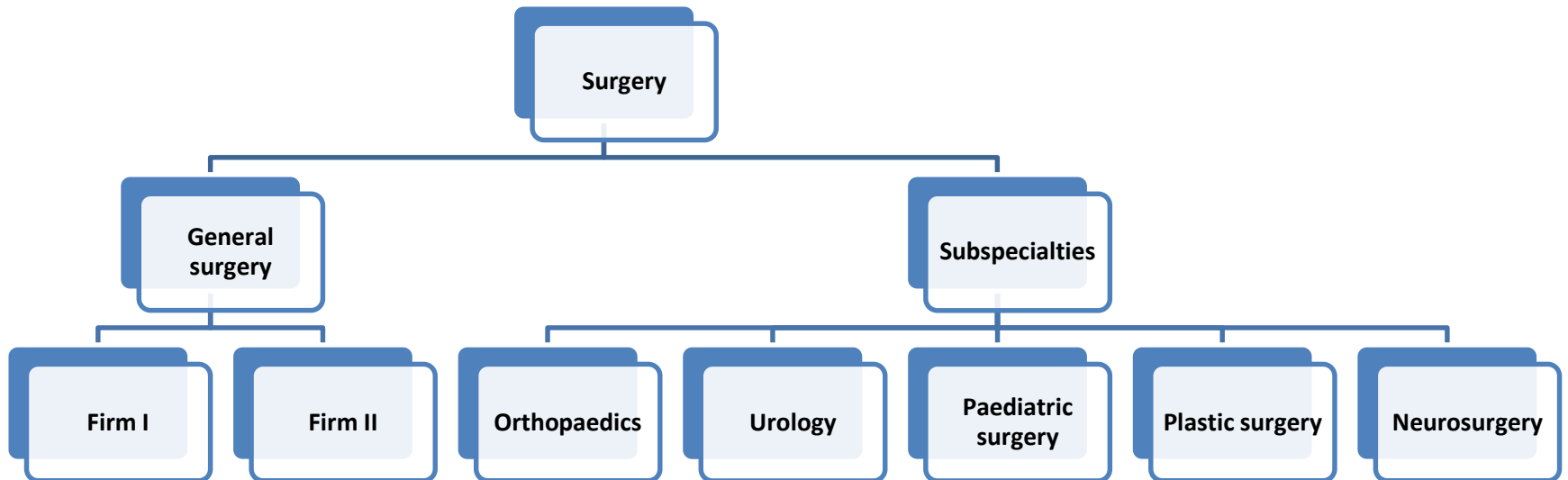
- *Cosmetic surgeries* are done to improve the appearance of otherwise normal tissue
- *Transplant surgery* is the replacement of a defective organ or body part another from a different human (or animal) into the patient.

# Other terminologies

- *Endoscopic surgery* is a form of *minimally invasive surgeries* where small incisions are made to insert miniaturized instruments into a body cavity or structure

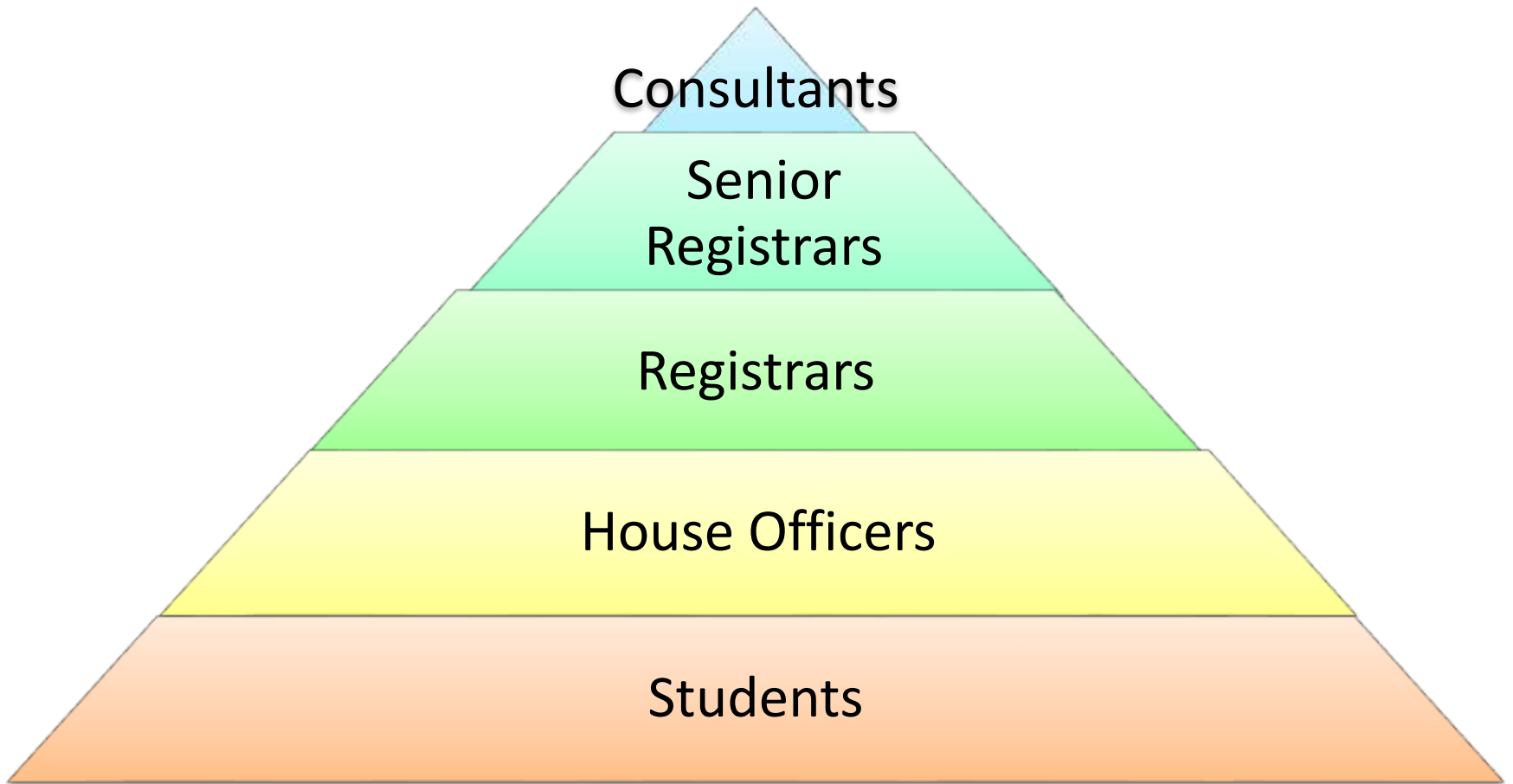


# Structure of surgery department





# Departmental Organogram



# Surgical Postings

- *Surgery I*: Introduction to surgery. Mainly through general surgery
- *Surgery II*: Postings through surgical subspecialties
- *Special Posting*: Postings in departments allied to surgeries
- *Surgery III*: Revision posting
- Department due for each posting is ₦300

# Surgical Postings

- *Students are distributed into general surgery firms or special posting groups*
- *Each firm has different schedules.*
- *But most schedules consists of:*
  - *Ward Rounds*
  - *Outpatients*
  - *Surgical procedures in the theaters*
  - *Call duties in Accident and emergency wards*
  - *Student presentations and seminars*

# Student assessments

- Two ways
  - i. Continuous assessments
  - ii. Final Year Examinations

# Student assessments

- Continuous assessments
- Makes 30% of students overall assessment
- Spans S1 to S3
- Include the following:
  - i. Attendance
  - ii. End of posting Examinations
  - iii. Mock Final year examination

# Student assessments

- Attendance
  - Very important
  - Must make at least 75% of attendance to sit for exam
  - Consists of attendance at *all* departmental and units' activities
  - Monitored by means of departmental log books, which each student must have

# Student assessments

- Surgery Department logbooks
  - Each student must have one
  - This must be purchase at the beginning of S1 posting.
  - The same one is used for S2 and S3
  - It must not be lost!
  - Do not give it to others to submit for you. This is examination fraud.

# Some Rules

- Students must be in the hospital by 7:30 am
- Students must respect the personnel above them in the organogram
- They must also respect other health professionals in the hospitals



# Rules

- Above all, empathize with patients. Show them
  - Respect
  - Courtesy
- Be
- Patient!! with them



The Post and Courier / Mic Smith

# Rules: Dressing

- Modest Dressing
- In Ward Cloths
- Have your name tags



# Do's of grooming

## Acceptable Beards



# Don'ts of grooming

## Unacceptable beards



# Hijab

**Accetable**



**Unacceptable**



# Don'ts of dressing





# Rules: Theater

- This is a very special place
- It has its own mode of dressing
- Its own codes of conduct which is designed to reduce the possibilities of infections



# Surgical Postings: Time table

Days	Time	Departmental Activities
Mondays	8am-9am	Morning reviews
Wednesdays	3pm-5pm	Departmental seminars
Everyday except Mondays	8am-10am	Lectures
Everyday except Wednesdays	3pm-5pm	Lectures
Everyday including weekends	5pm to 8pm	Call duties in the Accident and Emergency Department



# Venues of departmental activities

Activities	Venues
Seminars and Morning Reviews	Pathology Seminar room
Lectures	<ul style="list-style-type: none"><li>• Pathology Seminar room</li><li>• Theatre Lecture room</li><li>• Mortuary Lecture room</li><li>• Admin Block seminar room (Rarely)</li></ul>
Operative procedures	Theatre
Clinics	Consultant Outpatient Building
Ward rounds	Wards
Call duties	Accident and Emergency Ward

# Essential places

- Wards



# Essential places

- Outpatient Department



# Essential places

- Accident and Emergency



# Essential places

- Library





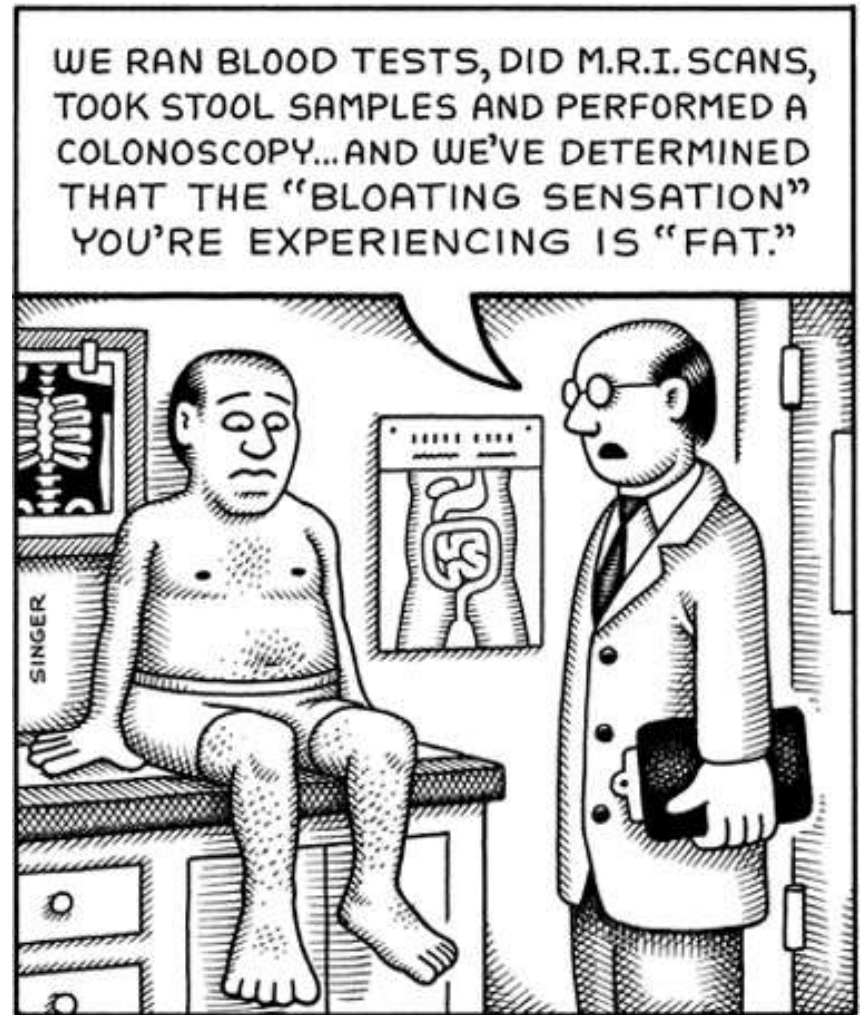
# Essential places

- Operating Theater



# Making Diagnosis

- Taking History
- Examination of the patient
- Taking Investigations



# Making Diagnosis

**Involves three main processes:**

- **History Taking**

Process of communication by which information is obtained from patients for the clinical diagnosis of their illnesses.

- **Physical Examination**

Process of communication by which signs are elicited in patients for the clinical diagnosis of their illnesses

- **Investigation**

The use of instruments to obtain information to arrive at patients' diagnosis



# Making Diagnosis

- The process of taking history and examining the patient is called *Clerking*



# Some advice

- Learn to love the hospital
- It's going to be your laboratory and classroom



# Some advice

- Make sure that you clerk and present at least one patient per week
- Attend all lectures
- Attend all ward rounds
- Attend all clinics



# Penalties

- A student who fails to attend up to 75% of departmental activities will not be allowed to sit for examinations
- A student who is improperly dressed will not be allowed to take part in departmental activities
- A student who is late to the departmental activity may be sent out or otherwise punished

# Surgery is life

- “Winning is overrated. The only time it is really important is in surgery and war.”

Al McGuire

# Welcome to surgery

- “Surgery is the red flower that blooms among the leaves and thorns that are the rest of medicine.”

Tradeu

Thank You

