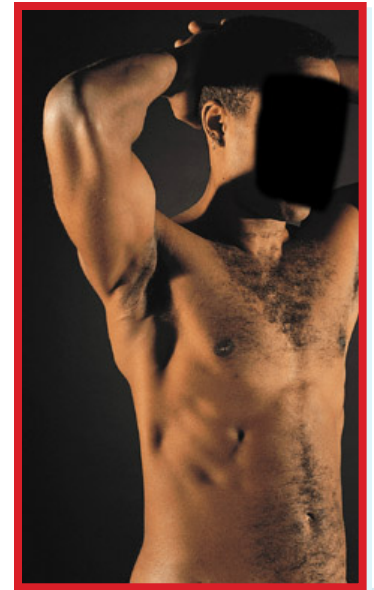


THE HUMAN AXILLA

Prof. Oluwadiya KS
www.oluwadiya.com

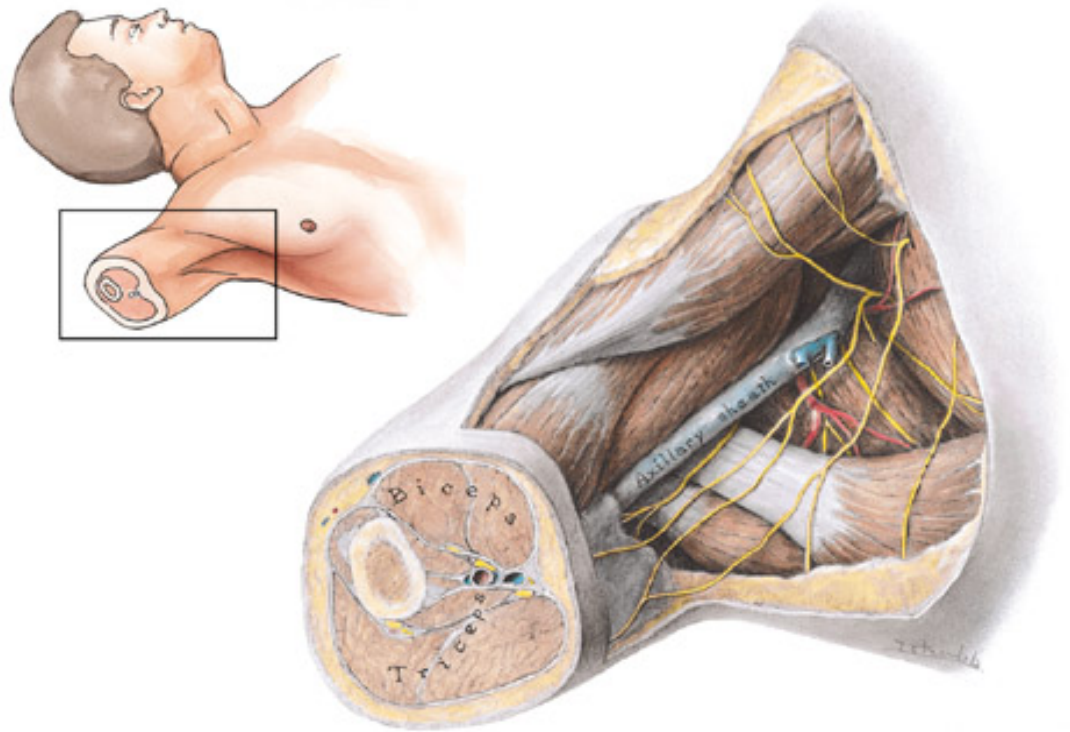


Location of the axilla

- ▶ Located at the point where the arm attaches to the thorax

It has:

- ▶ Four sides
- ▶ An inlet or apex
- ▶ A floor or base

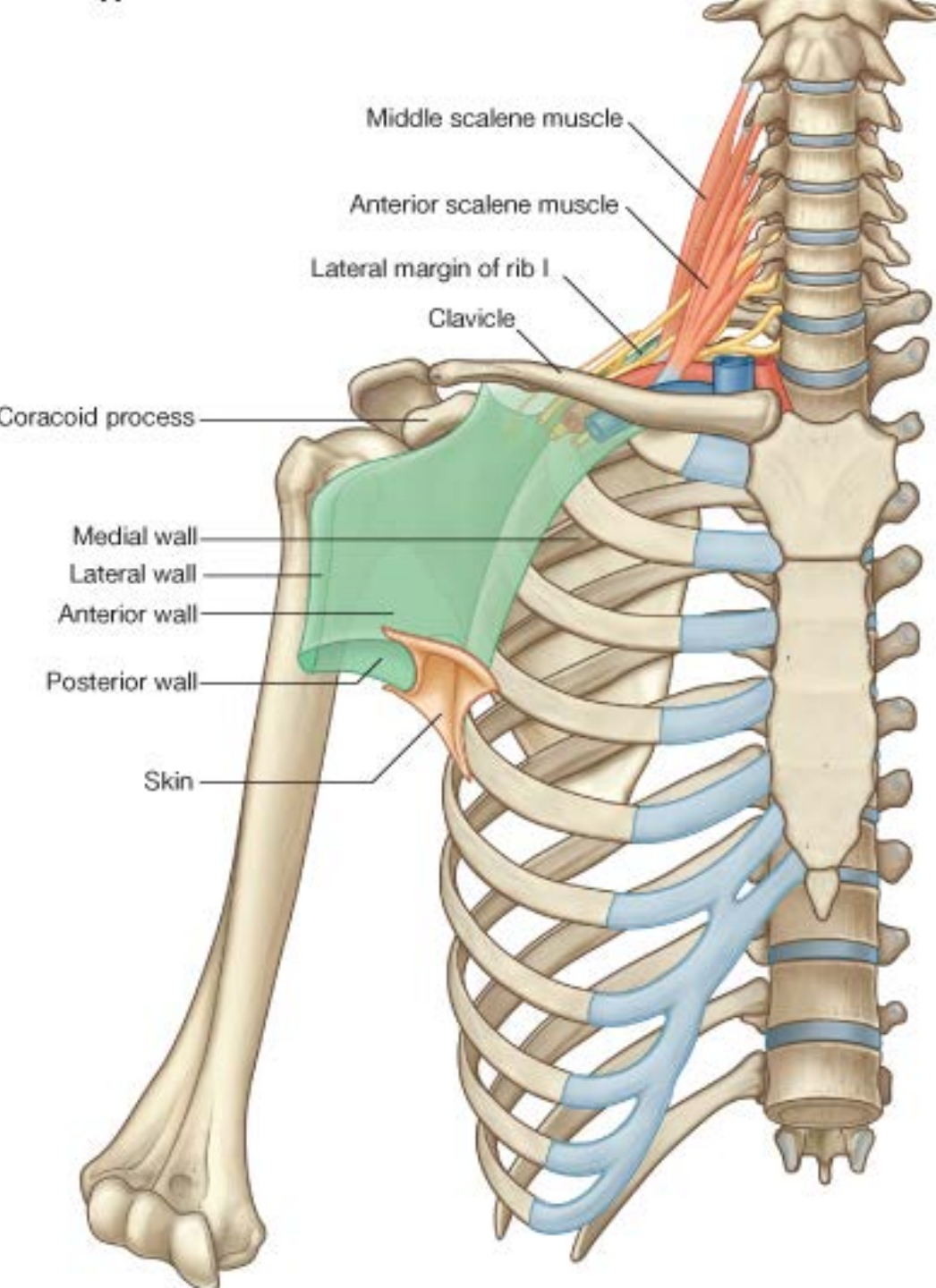


The axilla is described anatomically as having *four walls*.

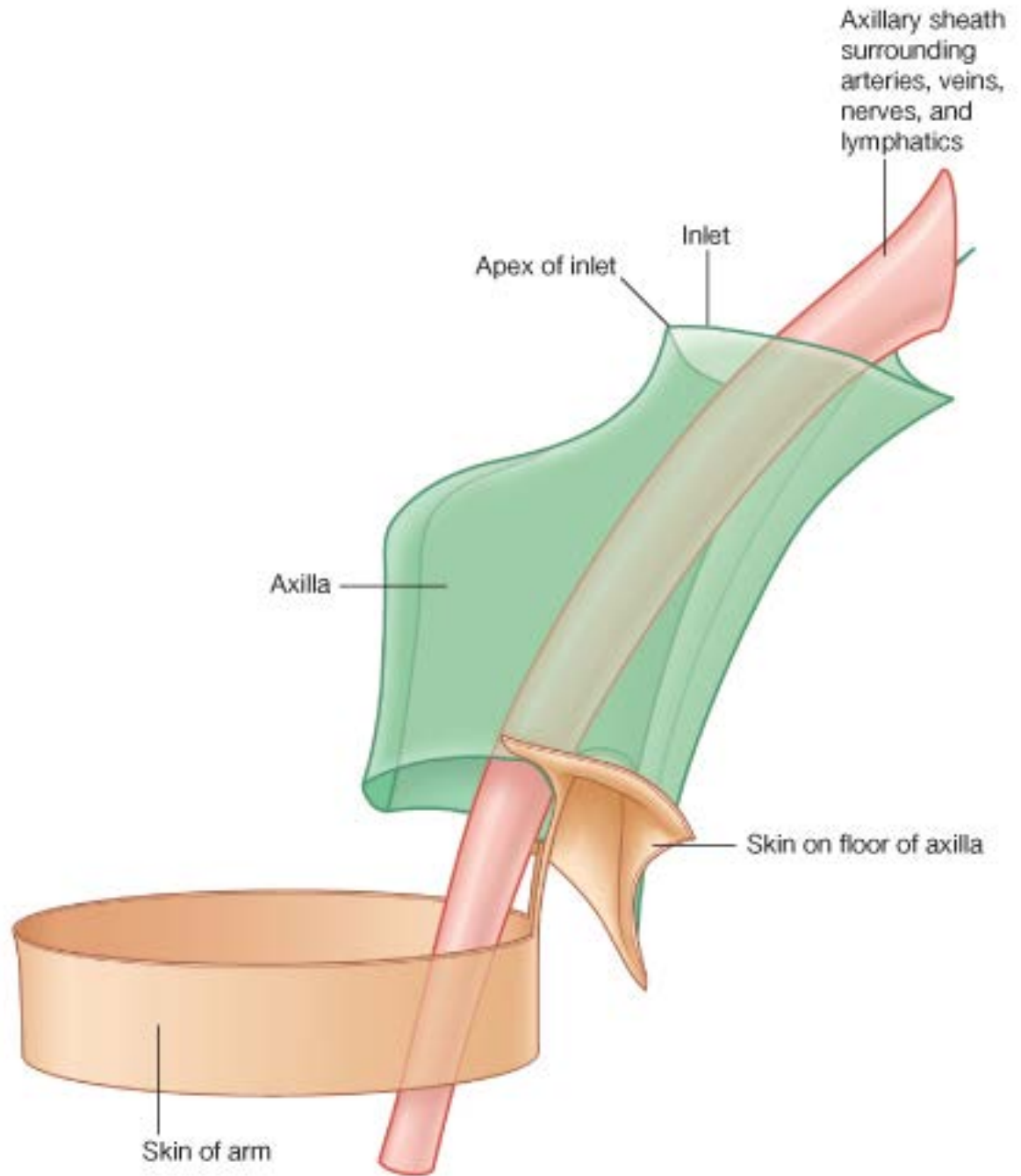
Medial - ribs
Anterior -
and intercostal
clavicle and
pectoral mm.
mm..

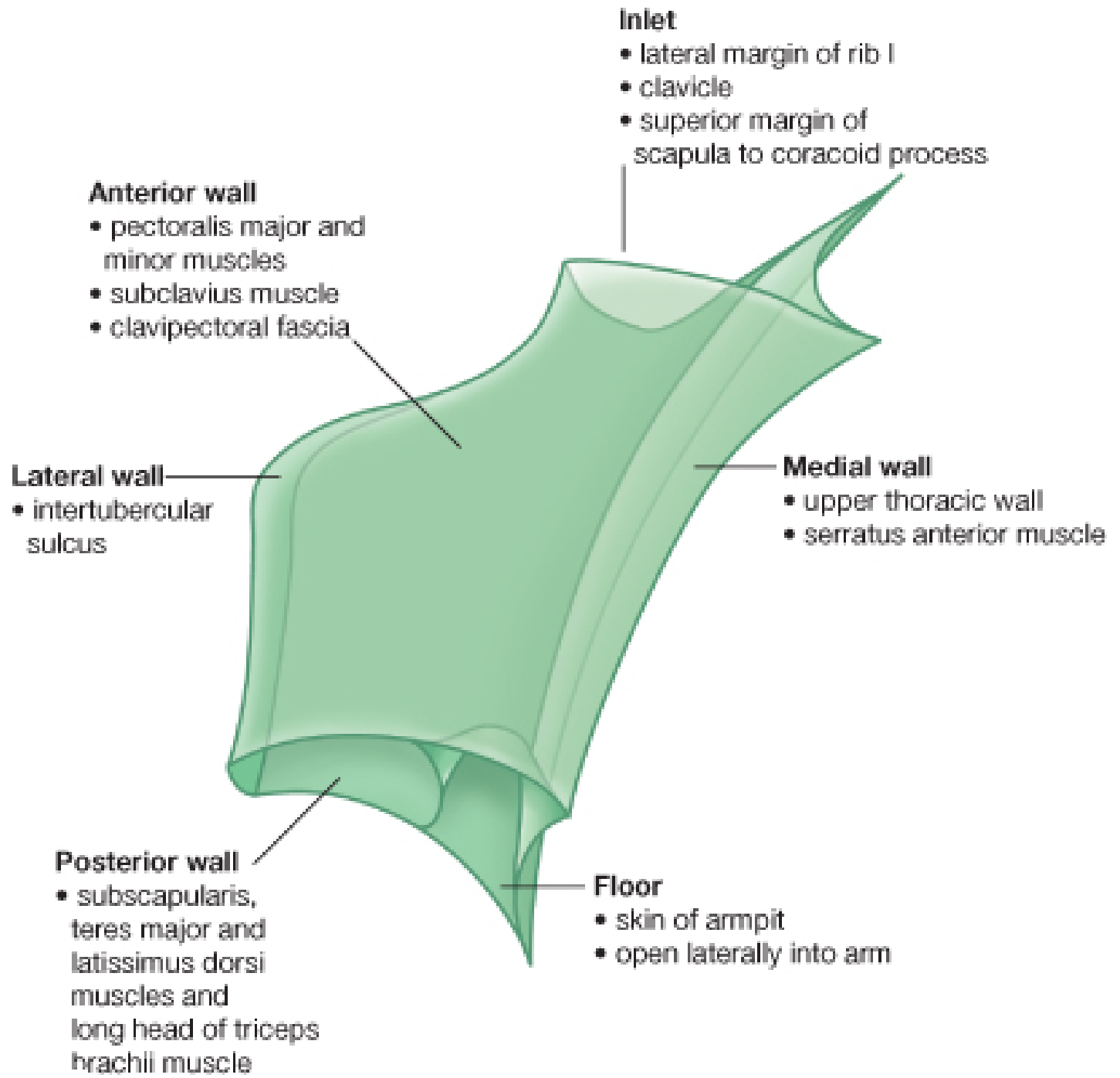
Posterior -
scapula and
subscapularis
m.

Lateral -
humerus.



- ▶ All major structures passing into and out of the upper limb pass through the axilla

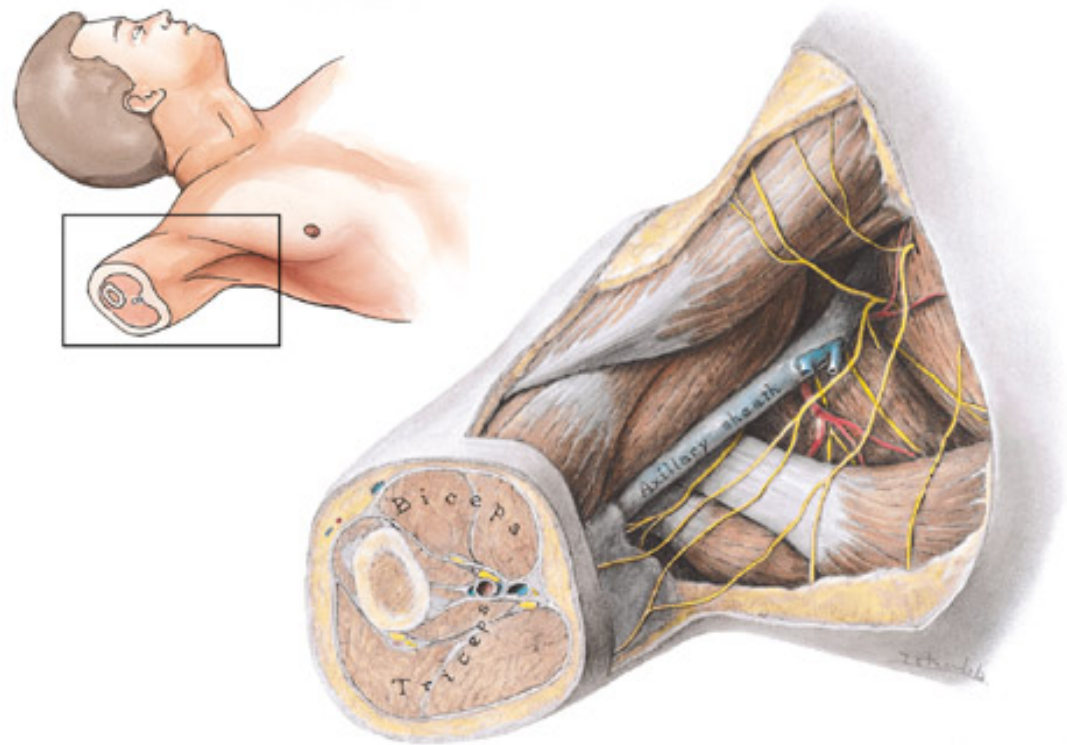




Boundaries of the Axilla

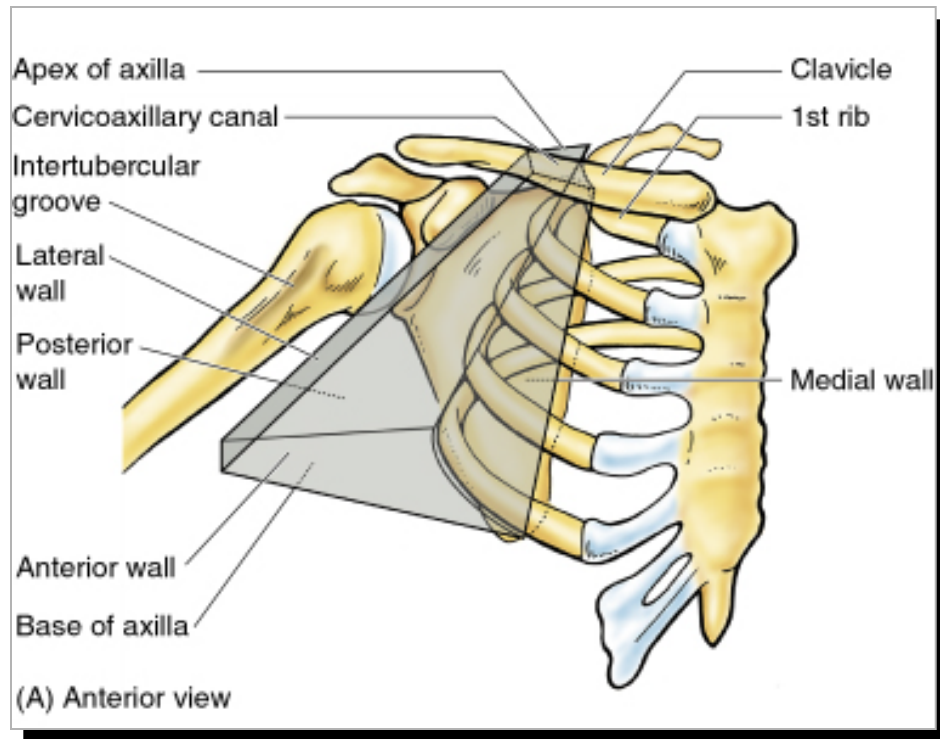
Apex: space between first rib, clavicle, scapula

Major vessels and nerves pass between the neck and the axilla by crossing over the lateral border of rib I and through the axillary inlet

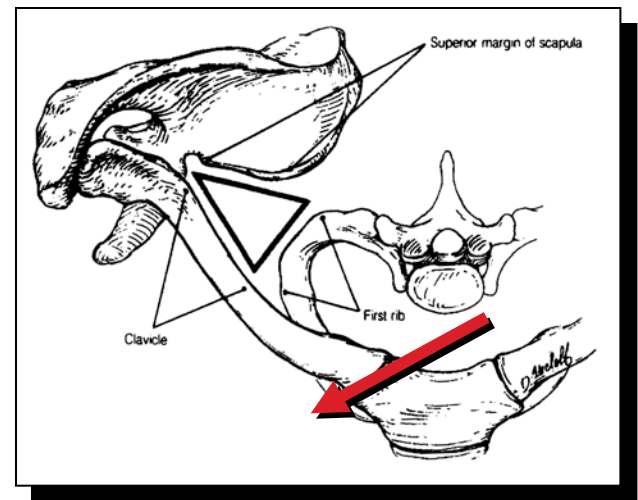


Boundaries of the Axilla

Another look at the apex



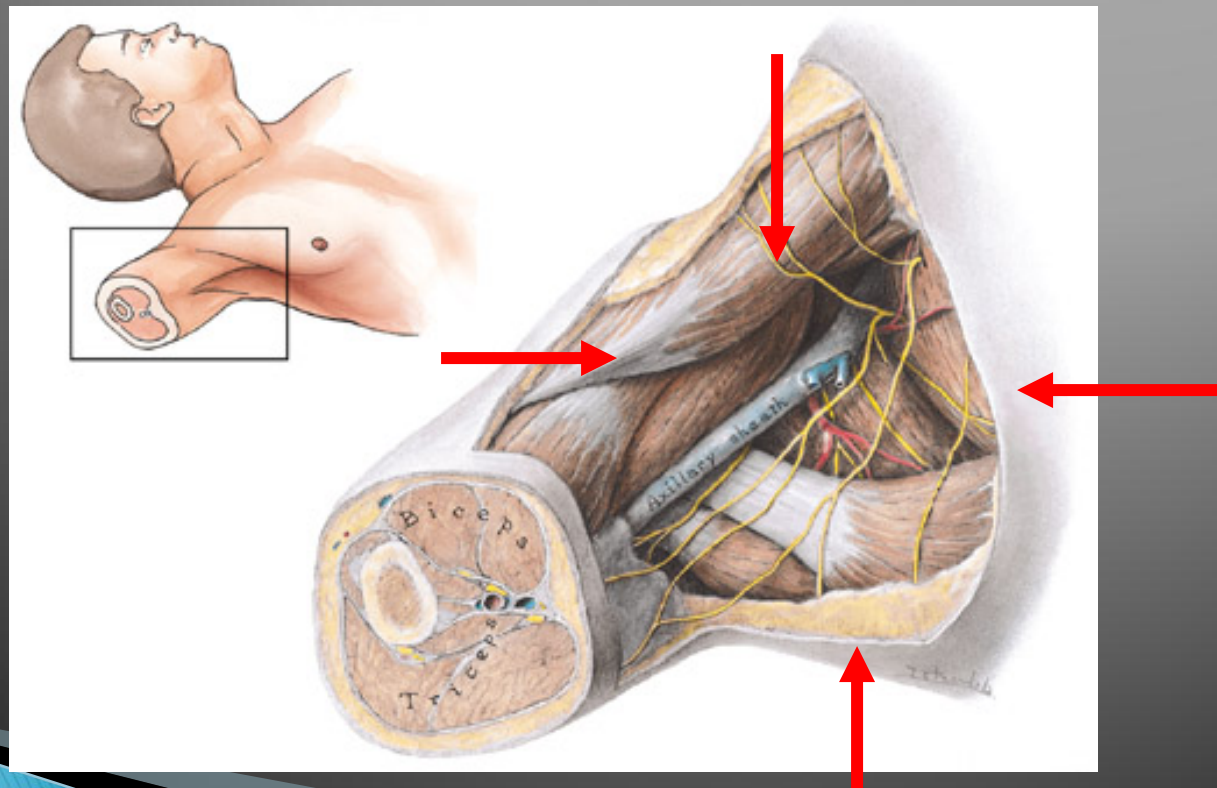
Anterior view



superior view

Boundaries of the Axilla

Base: lower open area of axilla



Boundaries of the Axilla

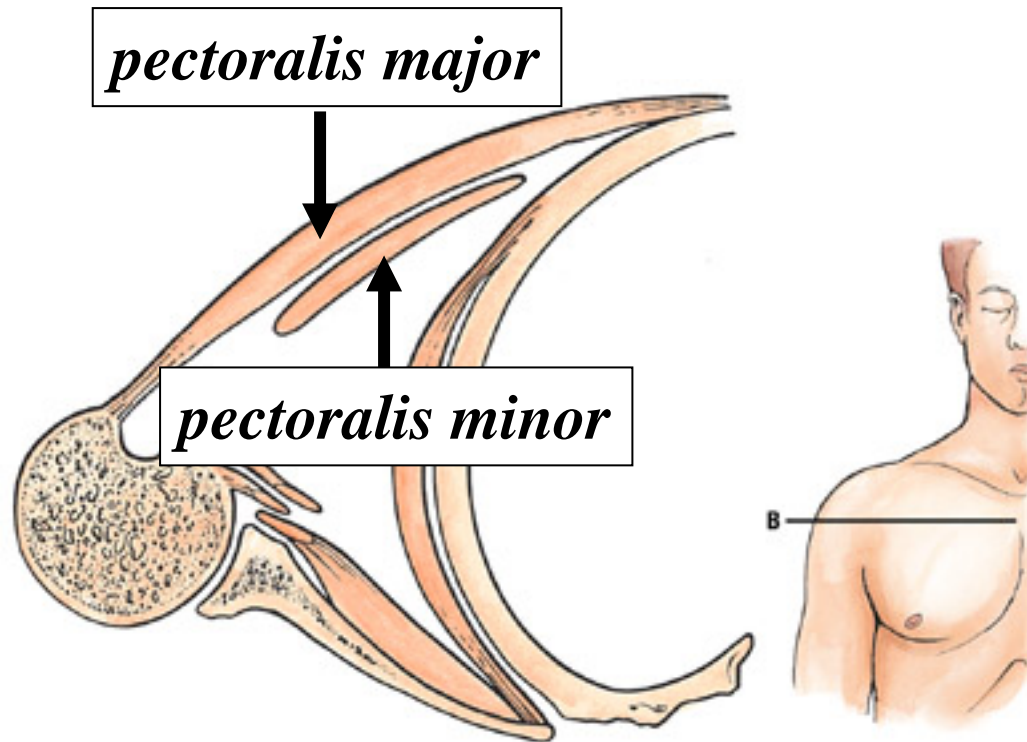
Base: lower open area of axilla

- skin
- hair



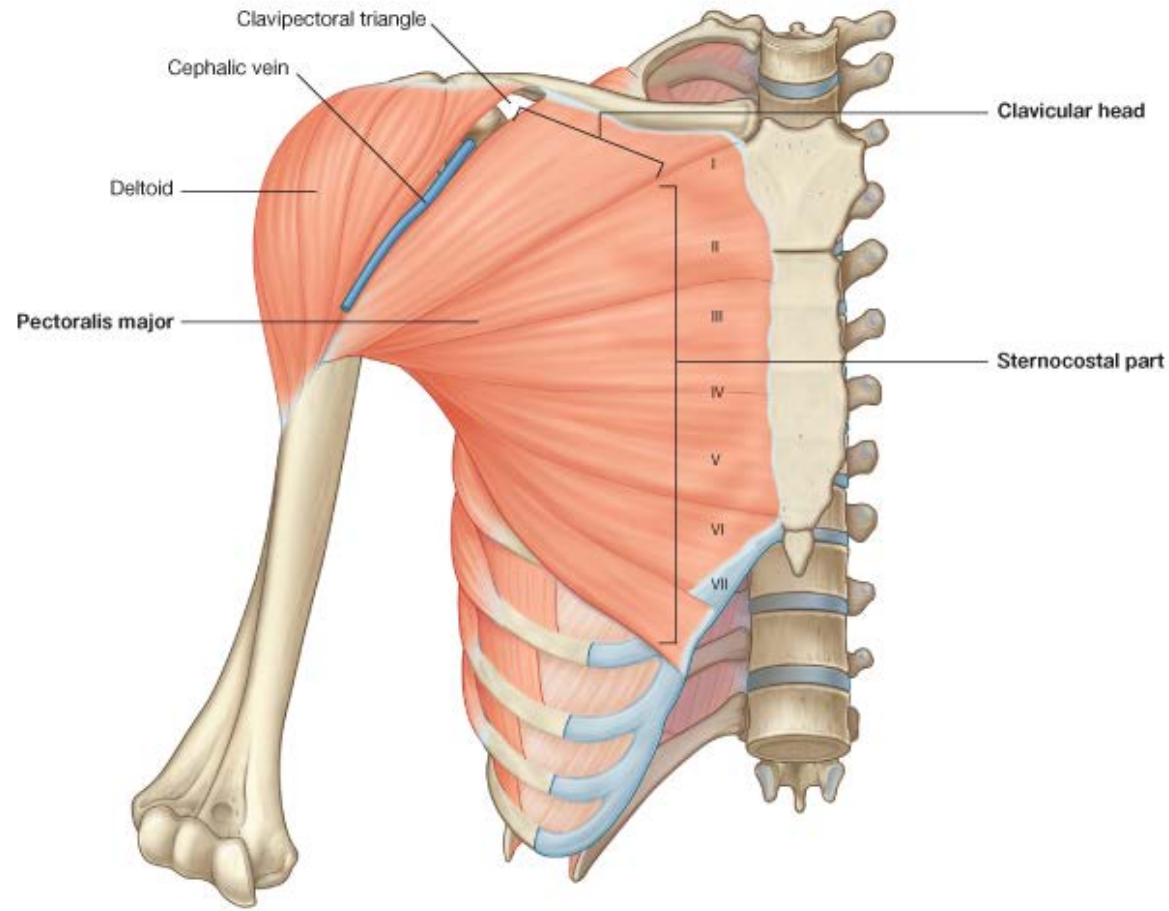
Boundaries of the Axilla

Anterior wall: *pectoralis major* and *minor*



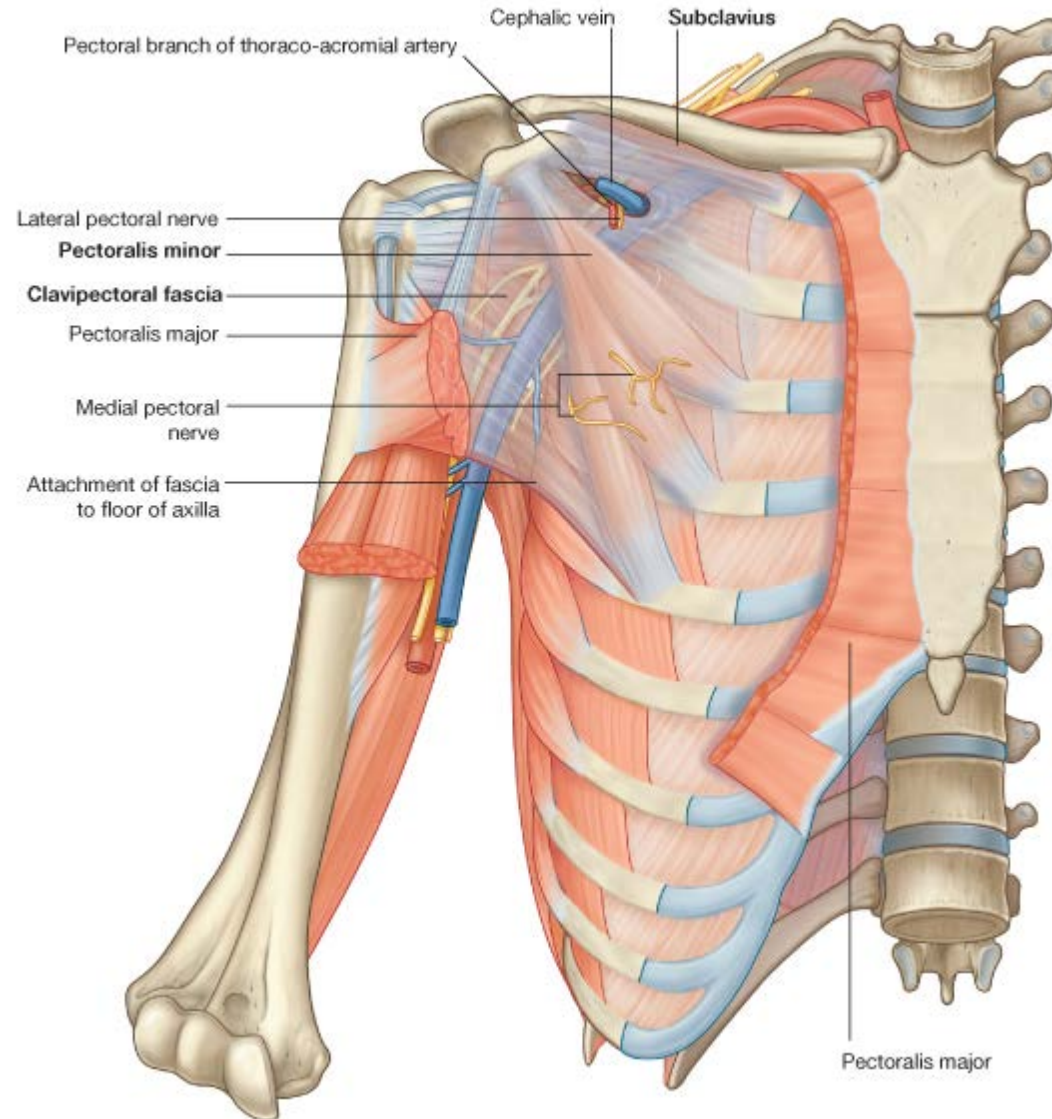
Boundaries of the Axilla

Anterior wall: *pectoralis major* and *minor*

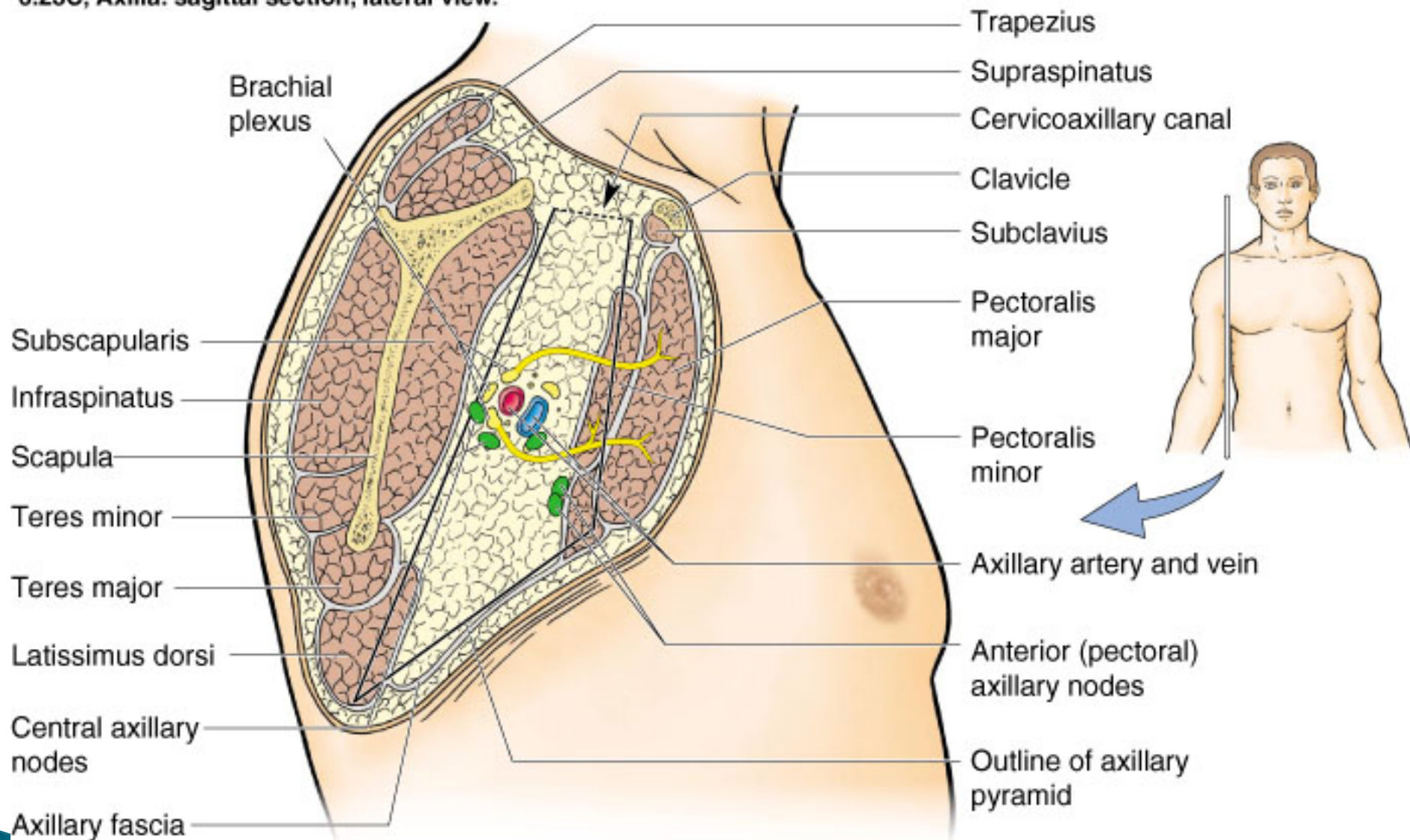


Boundaries of the Axilla

Anterior wall: *Pectoralis minor & clavipectoral fascia*



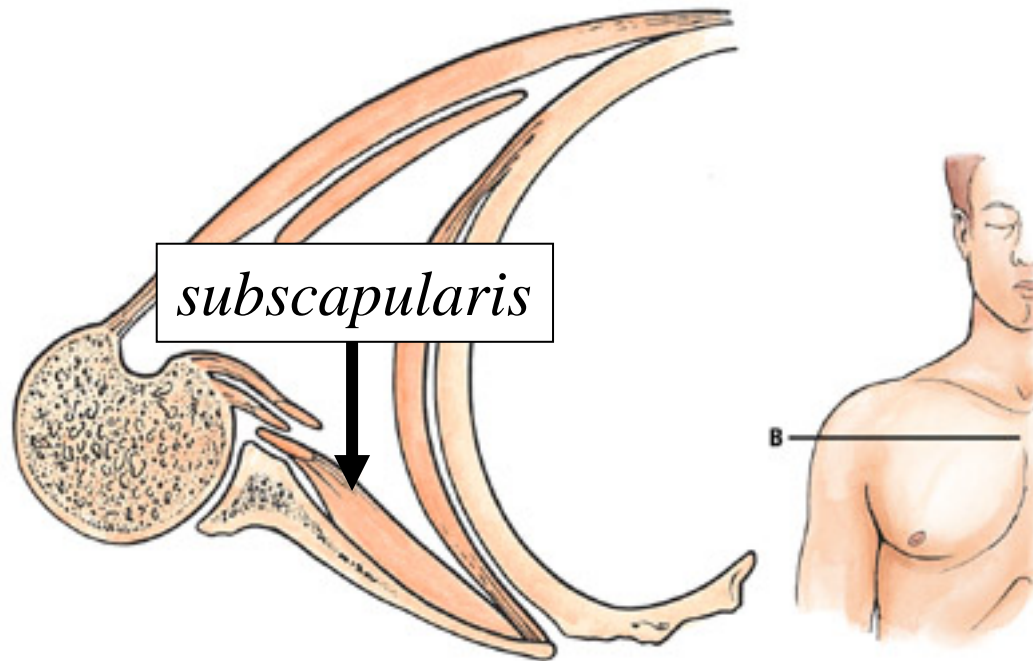
6.23C, Axilla: sagittal section, lateral view.



(C) Lateral view of sagittal section

Boundaries of the Axilla

Posterior wall: *latissimus dorsi, teres major, subscapularis*

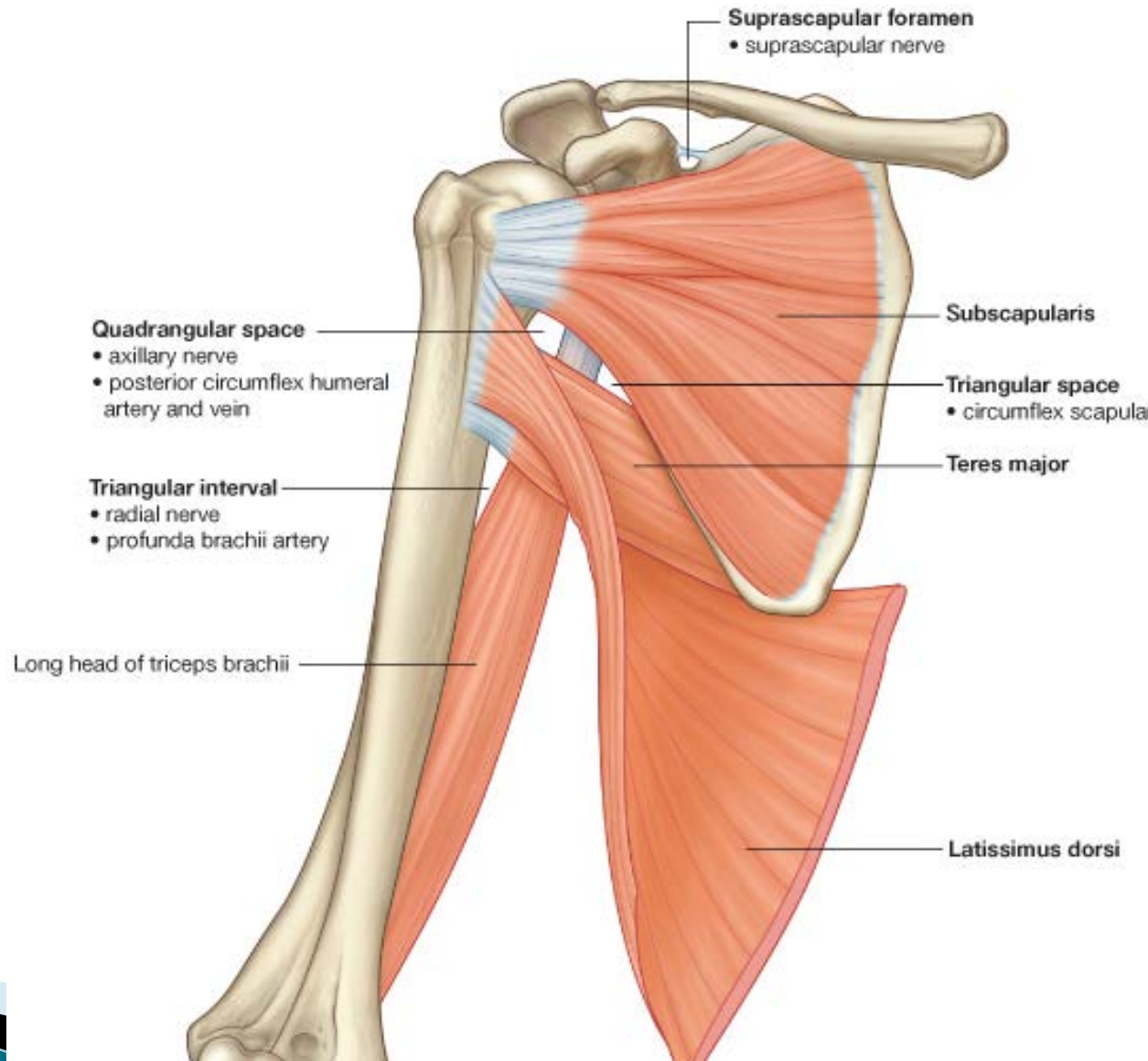


Boundaries of the Axilla

Posterior wall: *latissimus dorsi, teres major, subscapularis*

The Gateways

- the quadrangular space;
- the triangular space;
- the triangular interval



The gateways in the posterior wall

▶ Quadrangular space

1. The inferior margin of the subscapularis muscle;
2. The surgical neck of the humerus;
3. The superior margin of the teres major muscle;
4. The lateral margin of the long head of the triceps brachii muscle



▶ It allows through:

1. axillary nerve
2. posterior circumflex humeral artery and vein

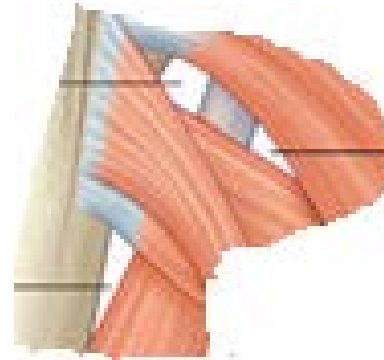
The gateways in the posterior wall 2

- ▶ The triangular space
 1. the medial margin of the long head of the triceps brachii muscle;
 2. the superior margin of the teres major muscle;
 3. the inferior margin of the subscapularis muscle.
- ▶ Passing through are
 1. The circumflex scapular artery and vein



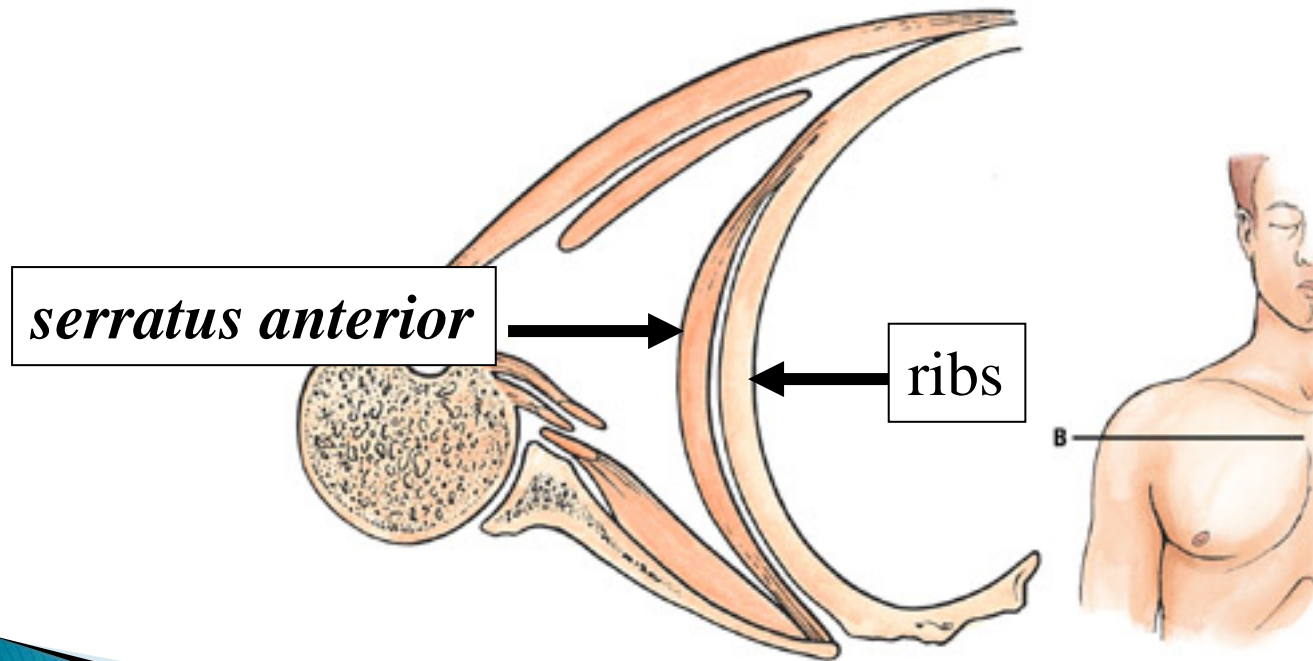
The gateways in the posterior wall 3

- ▶ The triangular interval
 1. the lateral margin of the long head of the triceps brachii muscle;
 2. the shaft of the humerus;
 3. the inferior margin of the teres major muscle
- ▶ Passing through :
- ▶ Radial Nerve



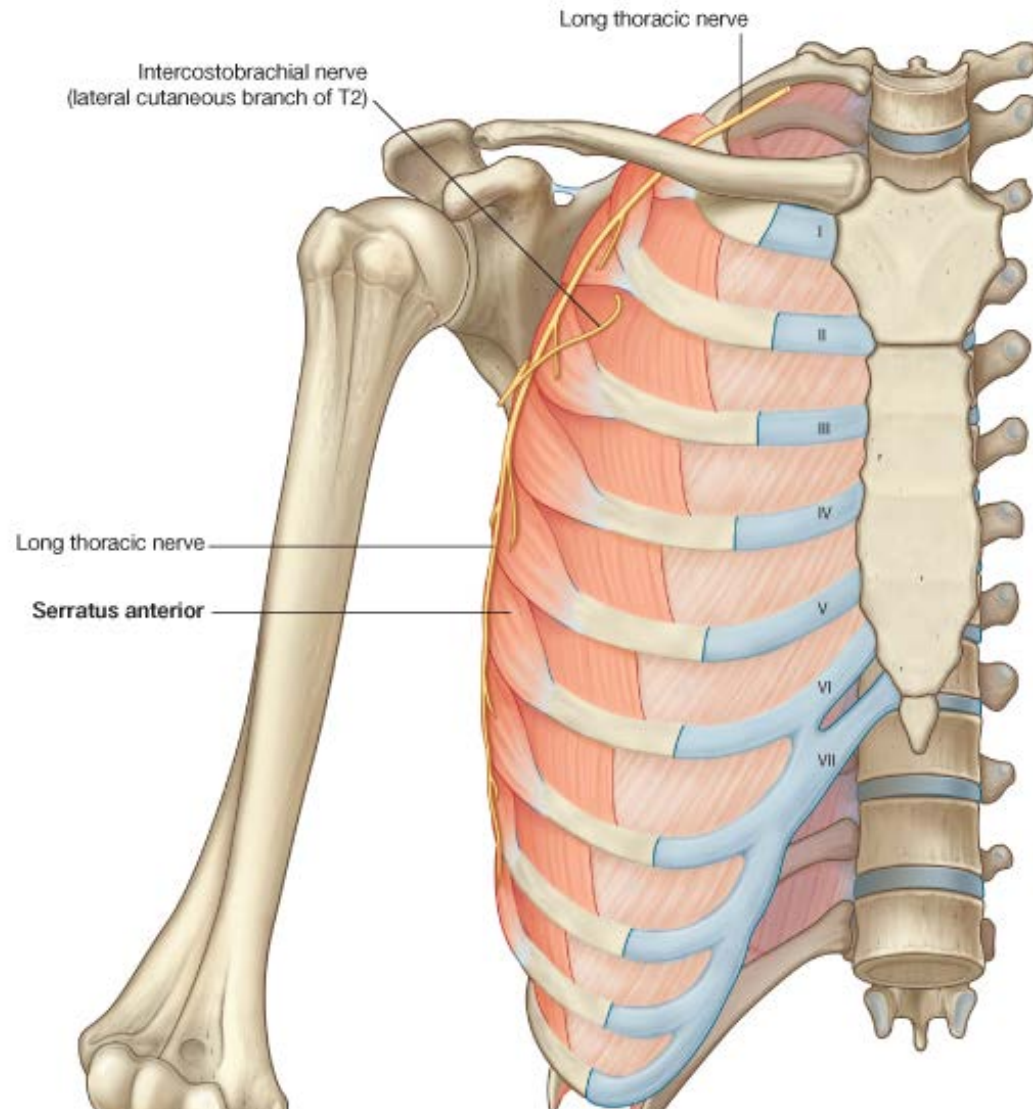
Boundaries of the Axilla

Medial wall: *serratus anterior* and ribcage



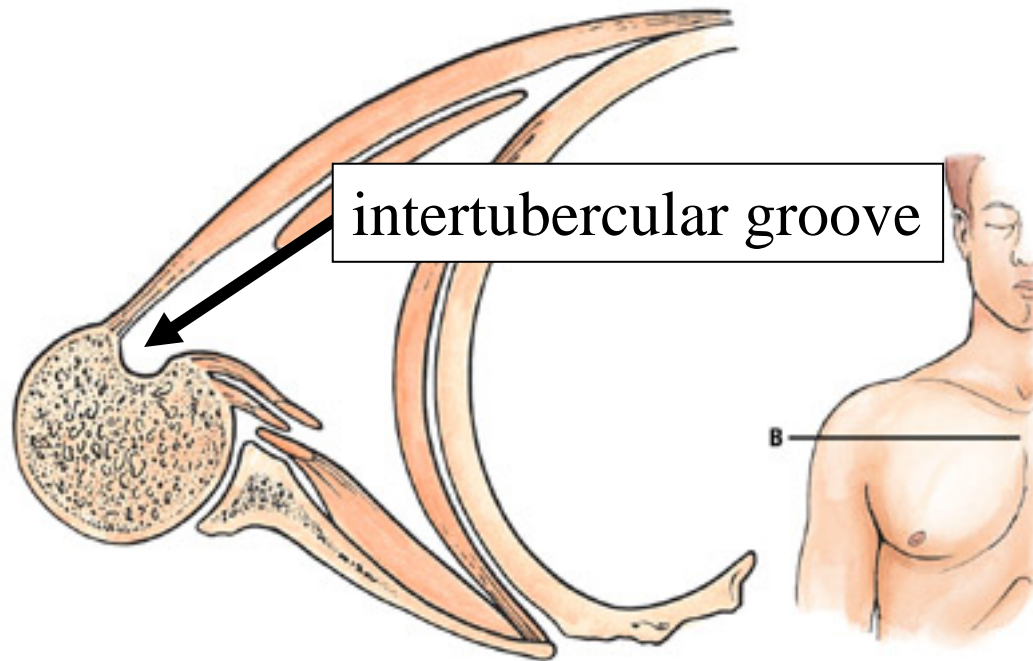
Boundaries of the Axilla

Medial wall: *serratus anterior* and ribcage



Boundaries of the Axilla

Lateral wall: *intertubercular groove of humerus*



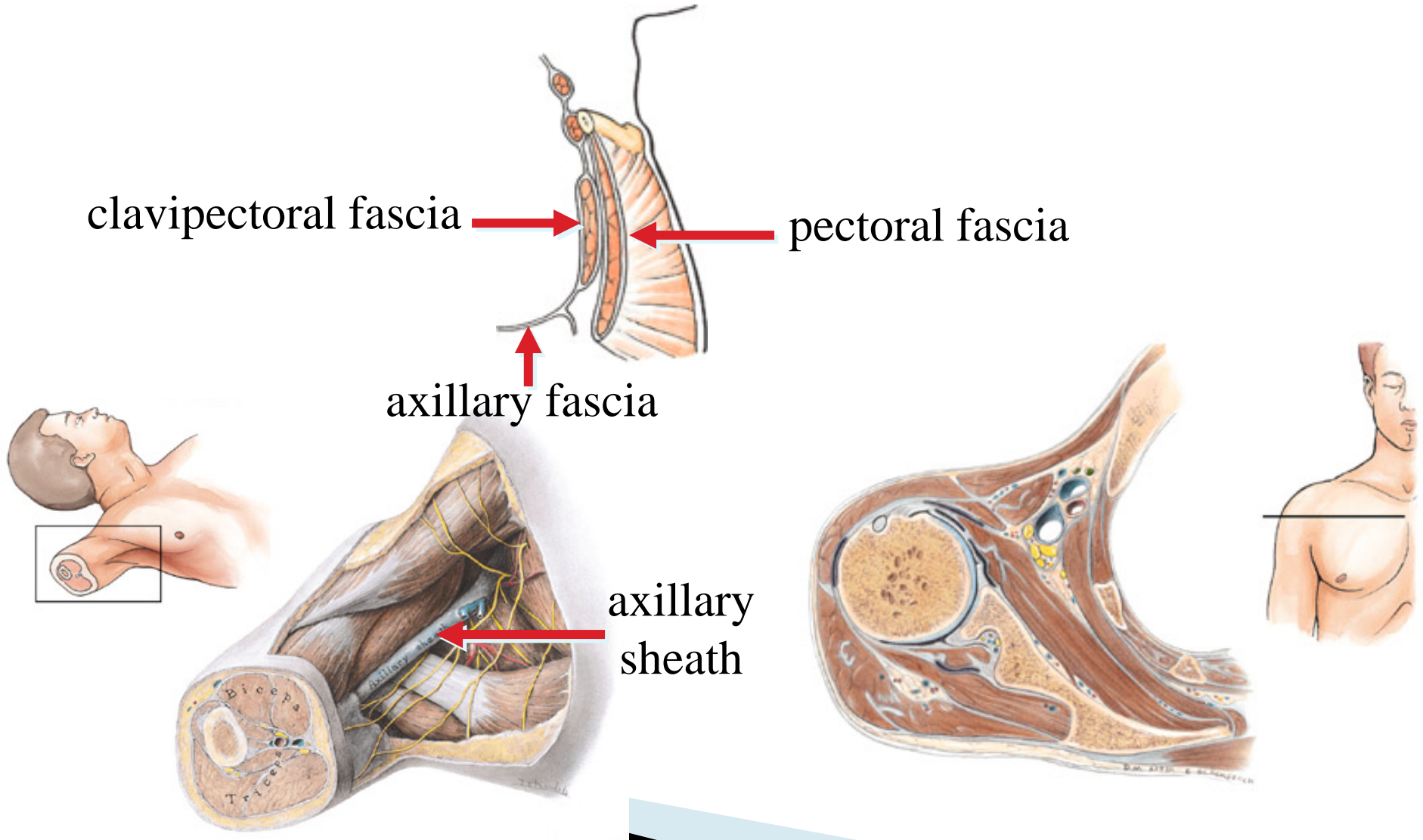
Axillary fascias

clavipectoral fascia

pectoral fascia

axillary fascia

axillary sheath



Contents of the axilla

- ▶ Passing through the axilla are
 1. Major vessels
 2. Brachial plexus
 3. Lymphatics of the upper limb.
- ▶ The space also contains
 1. Proximal parts of two muscles of the arm
 2. Axillary process of the breast,
 3. Lymph nodes draining the upper limb and chest wall.

Axillary artery

1st part:

highest thoracic artery

2nd part:

thoracoacromial artery

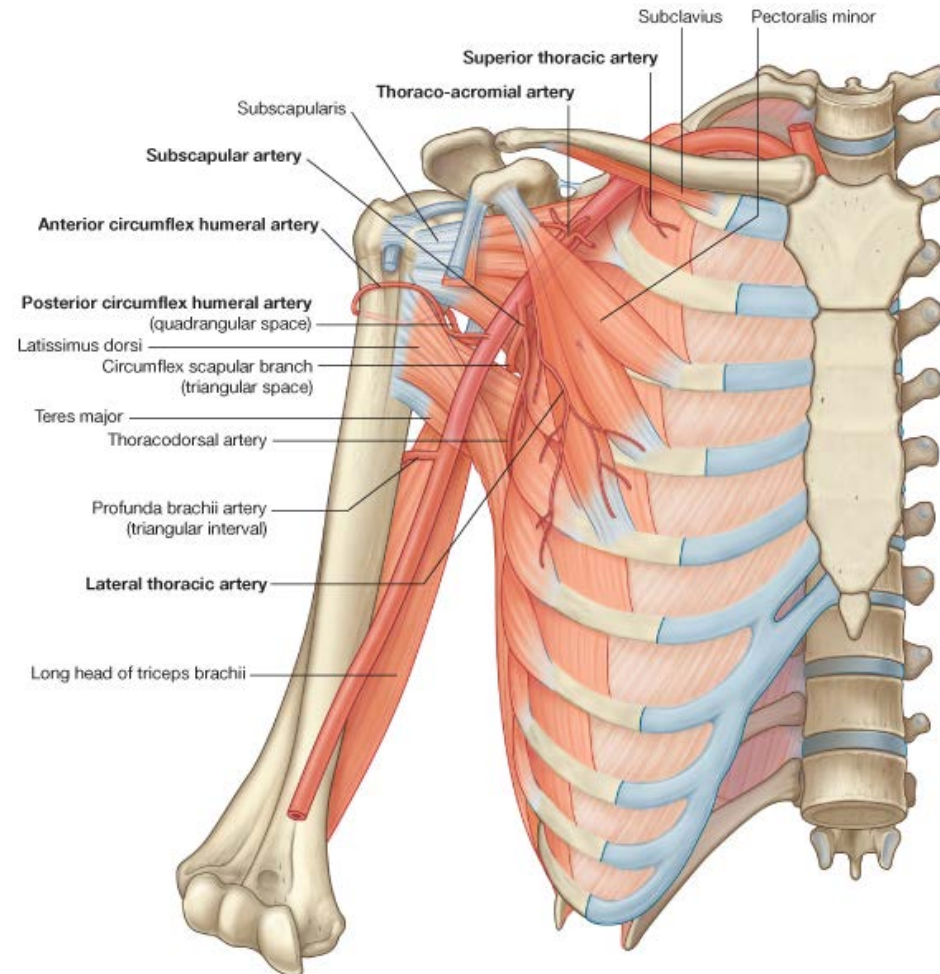
lateral thoracic artery

3rd part:

posterior circumflex humeral a.

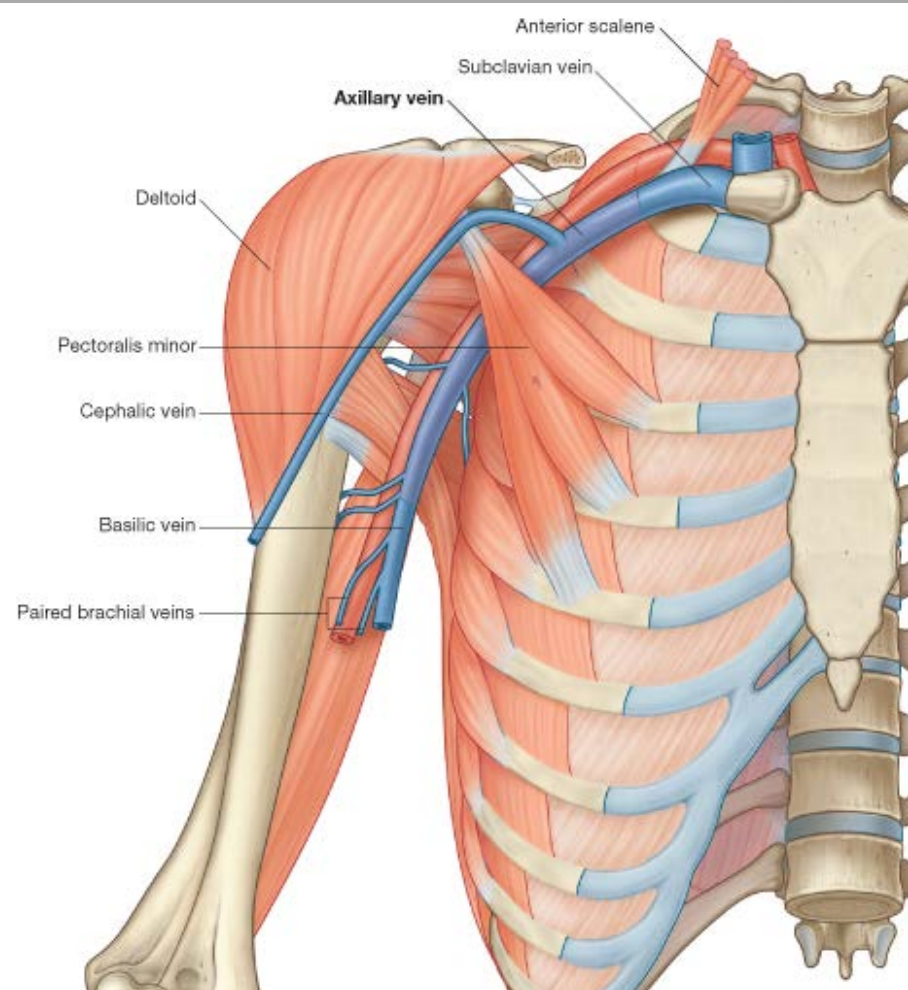
anterior circumflex humeral a.

subscapular artery



Axillary Vein

- ▶ Continuation of the basilic vein
- ▶ Medial and anterior to the axillary artery and
- ▶ Continues as the subclavian vein



Axillary lymph nodes

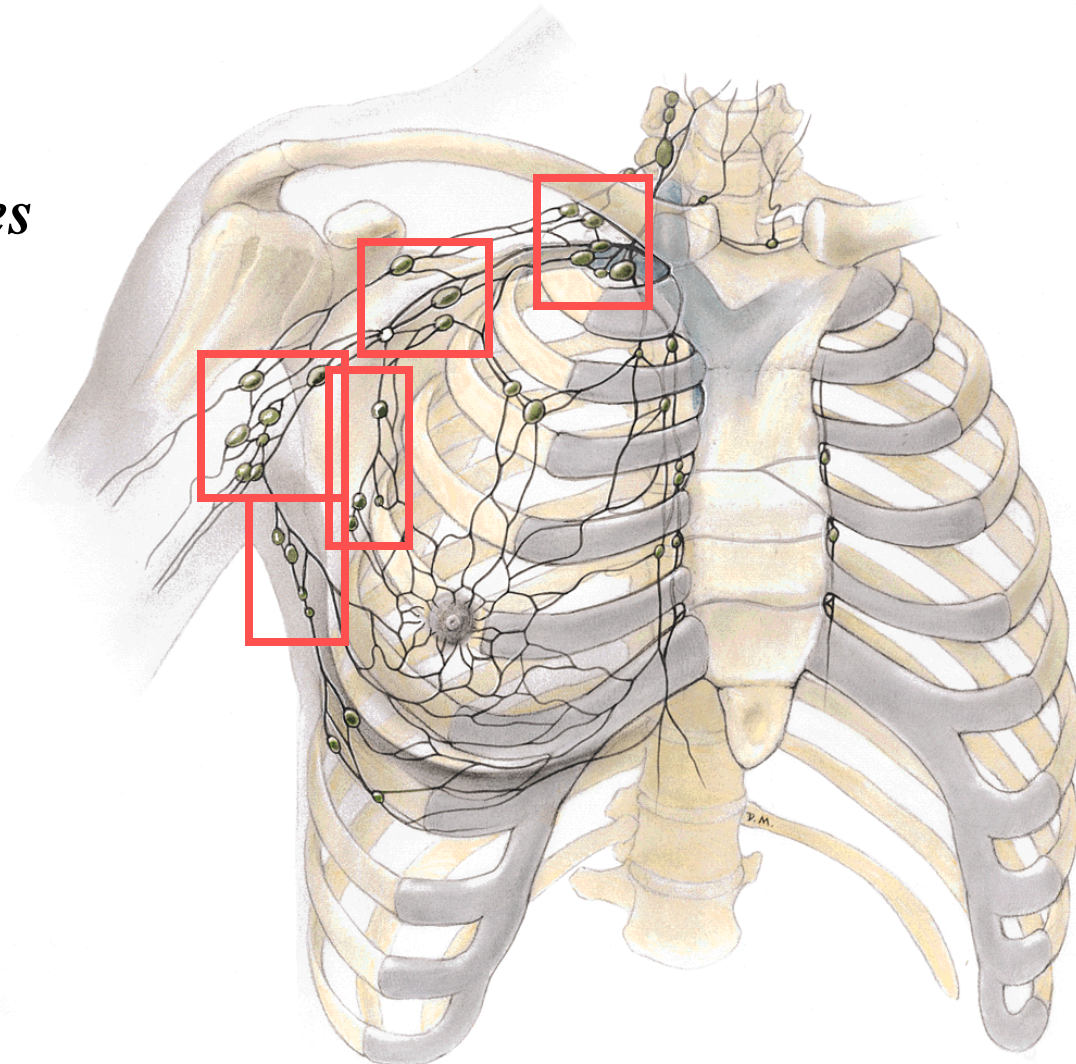
pectoral nodes

subscapular nodes

lateral nodes

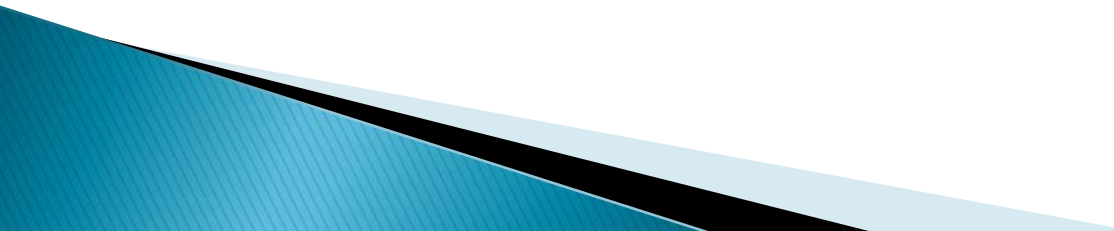
central nodes

apical nodes

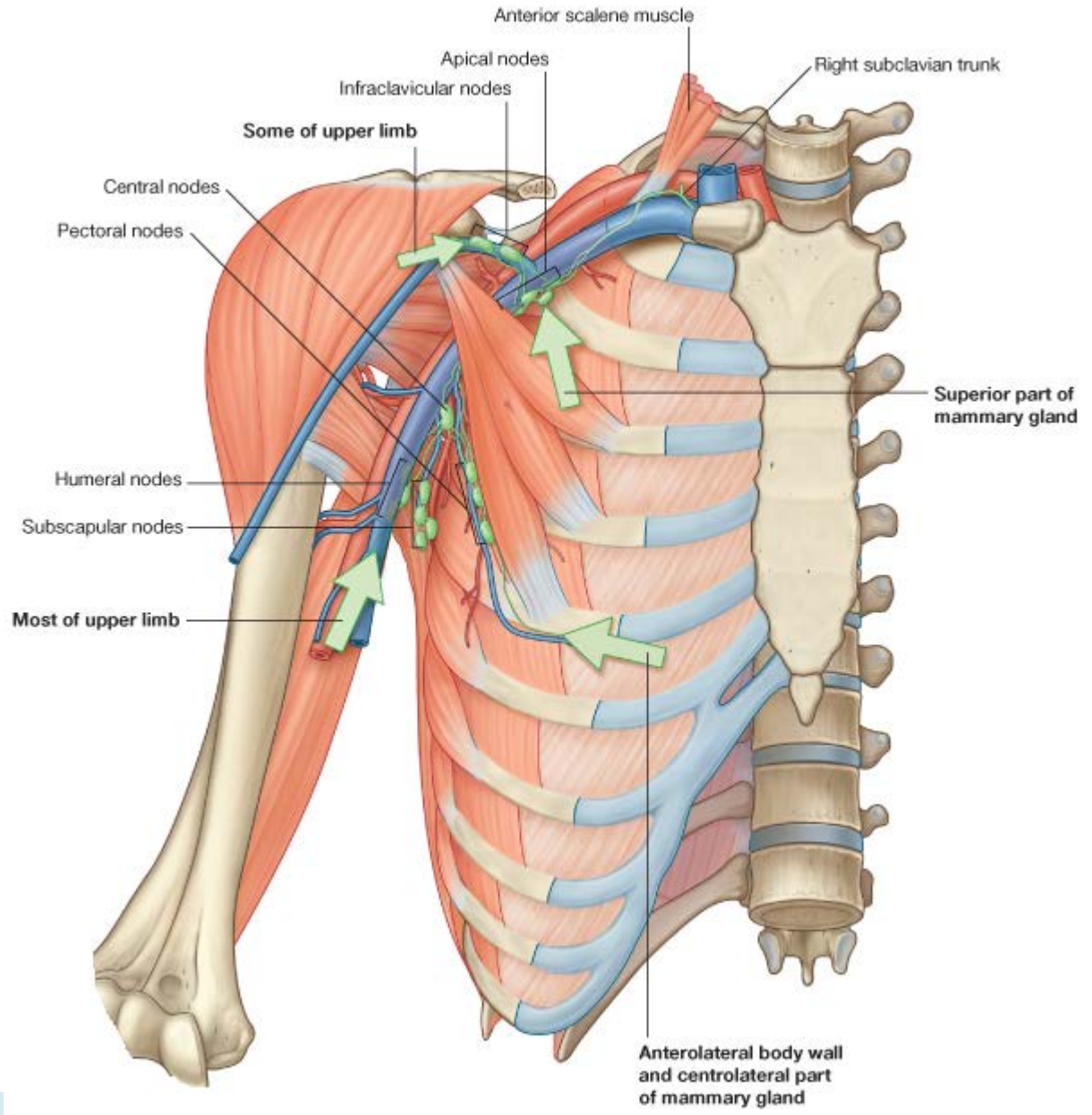




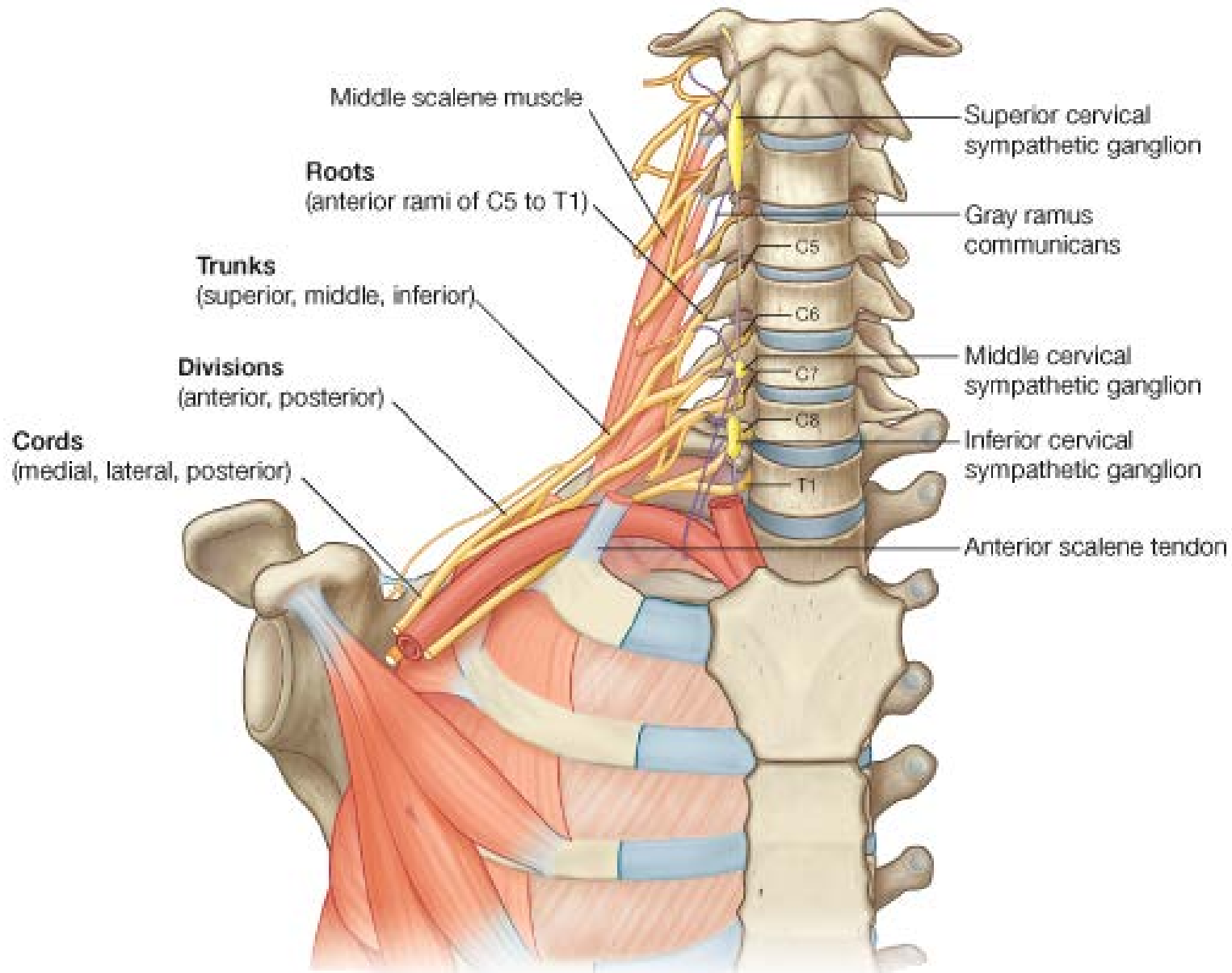
Axillary lymph nodes

- ▶ Pectoral nodes—where breast cancer metastasizes (just lateral of pectoralis muscle) these are sentinel nodes (first site of
 - ▶ Lateral nodes—where most lymphatics of upper limb drain into
- 

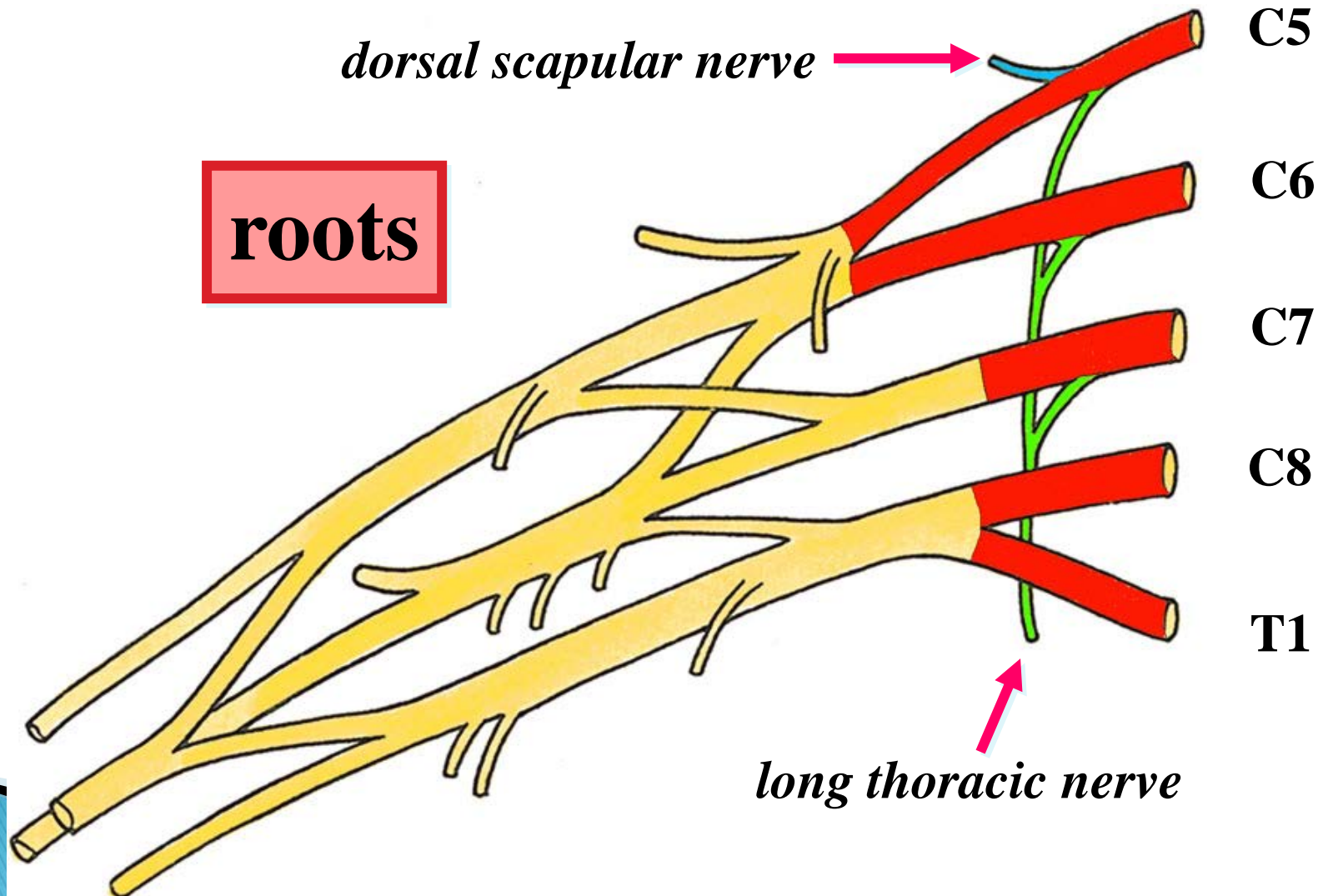
Axillary lymph nodes



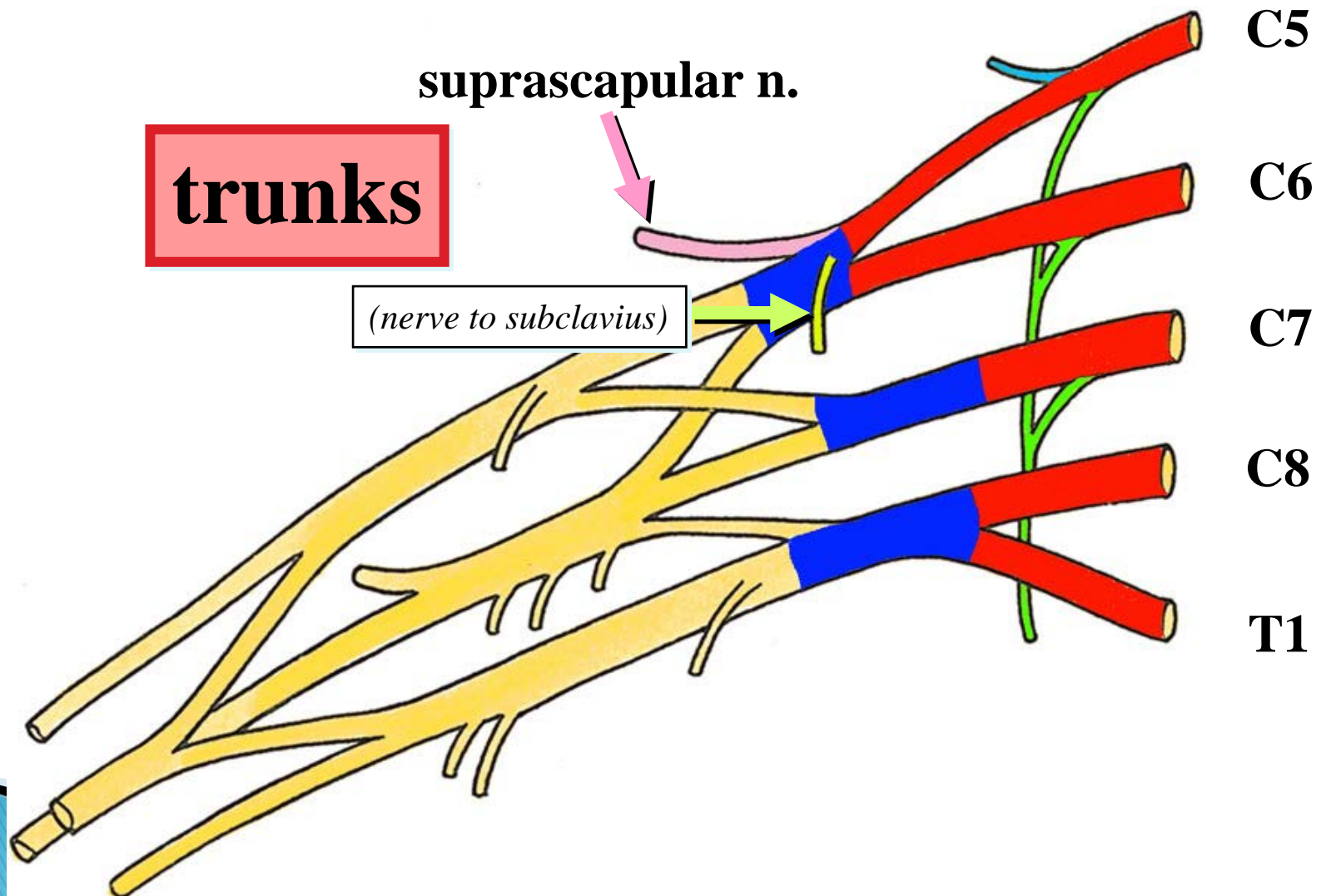
Brachial plexus...



Brachial plexus

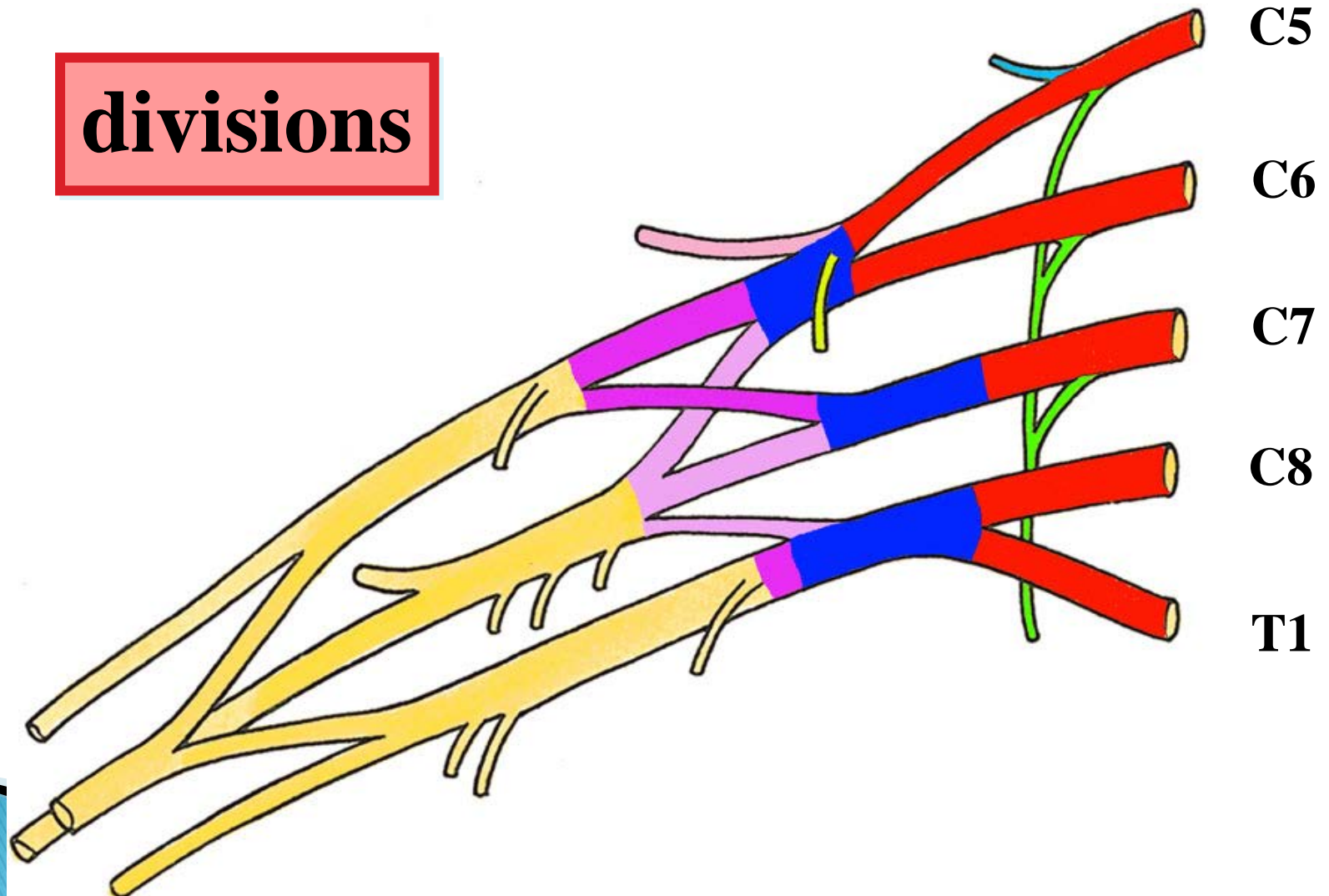


Brachial plexus

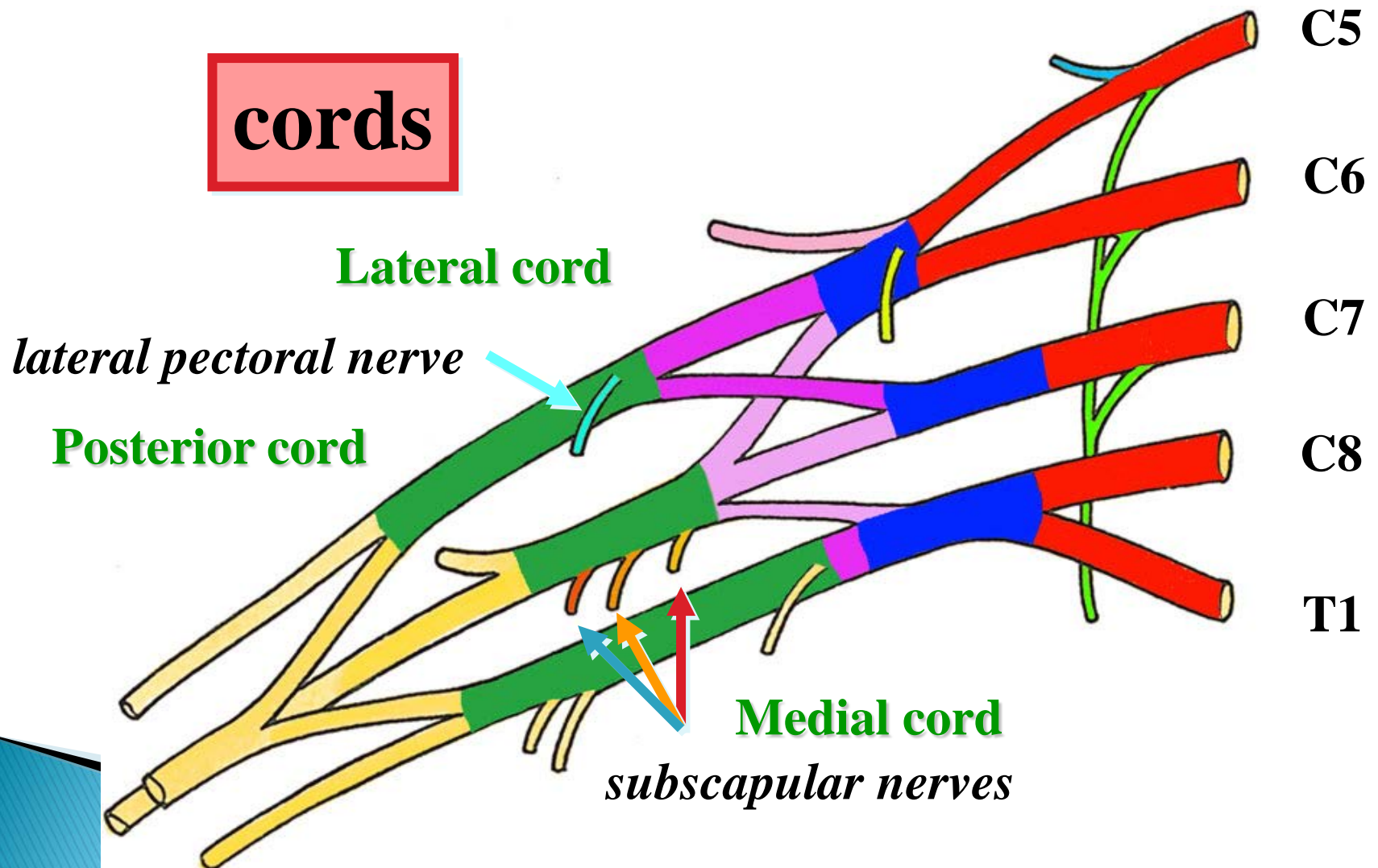


Brachial plexus

divisions



Brachial plexus



Thank You



PLEASE JOIN THE FORUM AT

WWW.OLUWADIYA.COM TO ASK QUESTIONS