

A photograph of an operating room with two surgeons in green scrubs and masks, illuminated by large overhead surgical lamps. The scene is dimly lit with a greenish tint.

Introduction to surgery

Prof Oluwadiya Kehinde
Department of Surgery
Ekiti State University Teaching Hospital
www.oluwadiya.com

What is surgery?

- Surgery is the medical specialty that uses operative manual and instrumental techniques on patients to investigate and treat pathological conditions.
- Derived from Latin word, *chirurgiae* which means "hand work"
- Aim is to help improve bodily function or appearance

Word Play

- The act of performing surgery is called *surgical procedure*
- It may also be referred to as an *operation*
- Thus *operation* is synonymous to *surgery*
- *Operating.....* is equivalent to *performing surgery*



Word Play

- The word *Surgical*...is an adjective that means *pertaining to surgery*
- *Surgical ward*: Wards in which surgical patients are admitted
- *Surgical instruments*: Instruments used for surgery

Who is a surgeon?

- The surgeon is a medical practitioner who performs surgical operations
- Usually, the person is a specialist
- There are many types of surgeons depending on their sub-specialization



Surgery Subspecialties

1. General surgery
2. Orthopaedic surgery
3. Neurosurgery
4. Ophthalmology
5. Otolaryngology
6. Urology
7. Cardiothoracic surgery
8. Paediatric surgery
9. Plastic surgery
10. Trauma surgery
11. Oral and maxillofacial surgery

General surgery

- Colorectal surgery
- Vascular surgery
- Transplant surgery
- Breast surgery
- Surgical oncology
- Endocrine surgery

Types of surgical procedures

- Broadly divided into two:
 - i. Elective surgery
 - ii. Emergency surgery

Types of surgical procedures

- An elective surgery is done to correct a non-life-threatening condition.
- Usually done either at the behest of the patients or their relatives
- But timing is subjected to availability of time, facilities and patient's fitness
- Have the best outcomes

Types of surgical procedures

- Emergency surgeries must be done quickly to save lives, limbs, or preserve functions.
- They must be done even when conditions are not optimal
- But even then, certain conditions need to be fulfilled before they are done.
- Outcomes may not be as satisfactory as elective surgeries

Other terminologies

- *Exploratory surgery*: Done when a surgeon is not sure of the diagnosis. It is done to aid or confirm a diagnosis
- *Biopsy*: The surgical removal of a small portion of tissue for diagnosis

Other terminologies

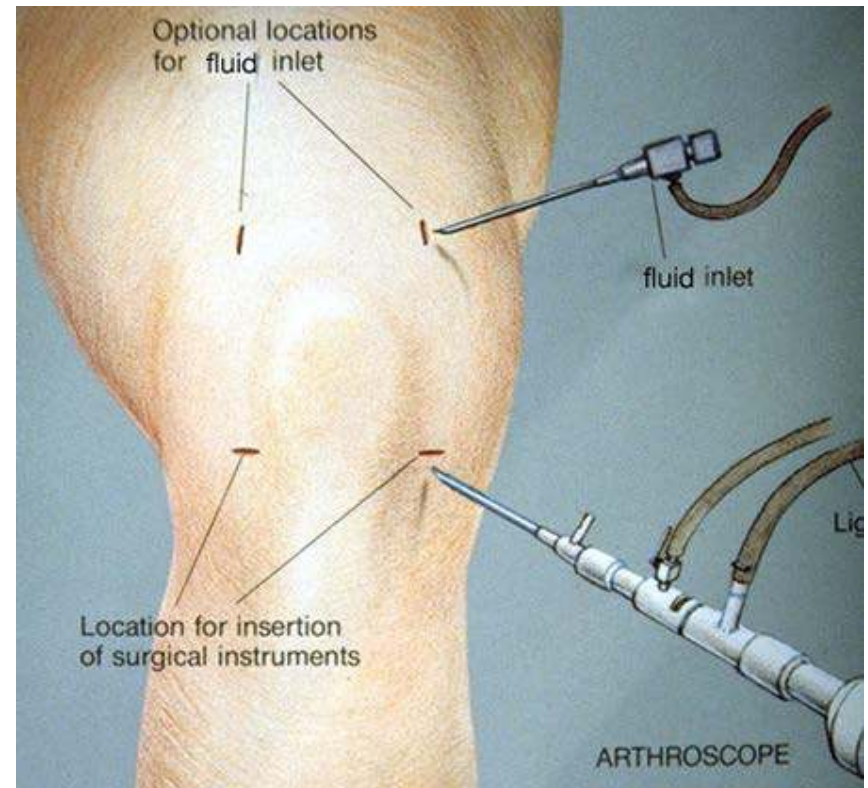
- *Biopsy*: The surgical removal of part of, or the whole tissue or organ for diagnosis. They are of two types:
 - Incision biopsy*: When only part of a tissue or organ is removed. They are done when the growth is considered malignant
 - Excision biopsy*: When the whole tissue is removed. It is done when the condition is considered benign

Other terminologies

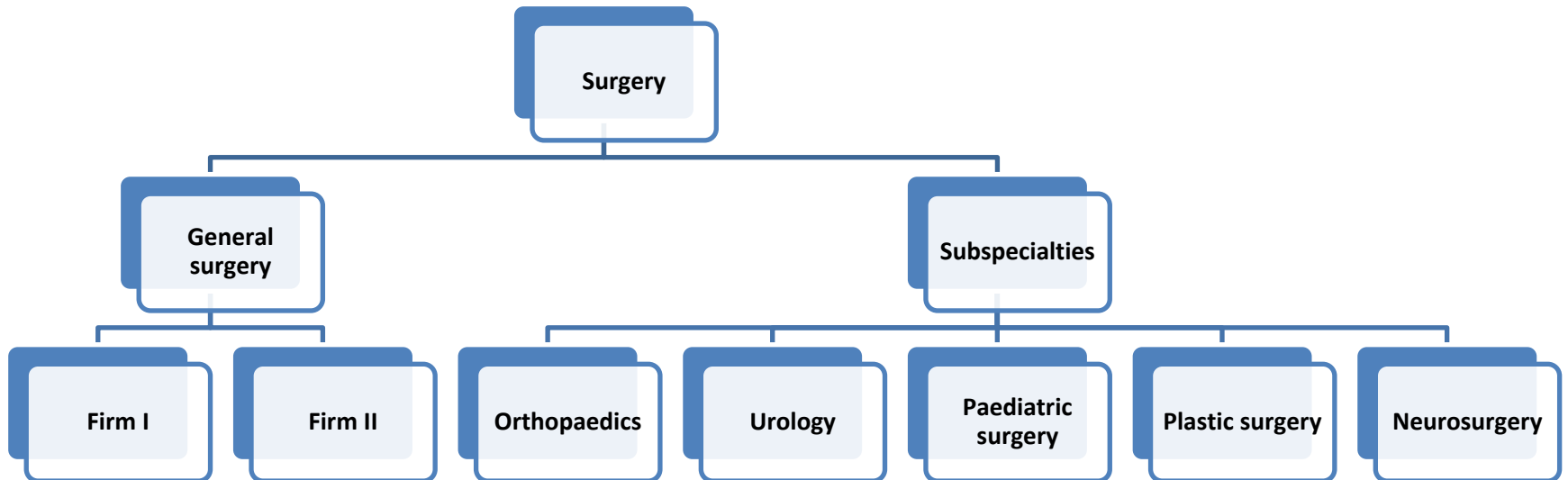
- *Cosmetic surgeries* are done to improve the appearance of otherwise normal tissue
- *Transplant surgery* is the replacement of a patient's diseased organ or body part with one from another human (or animal).

Other terminologies

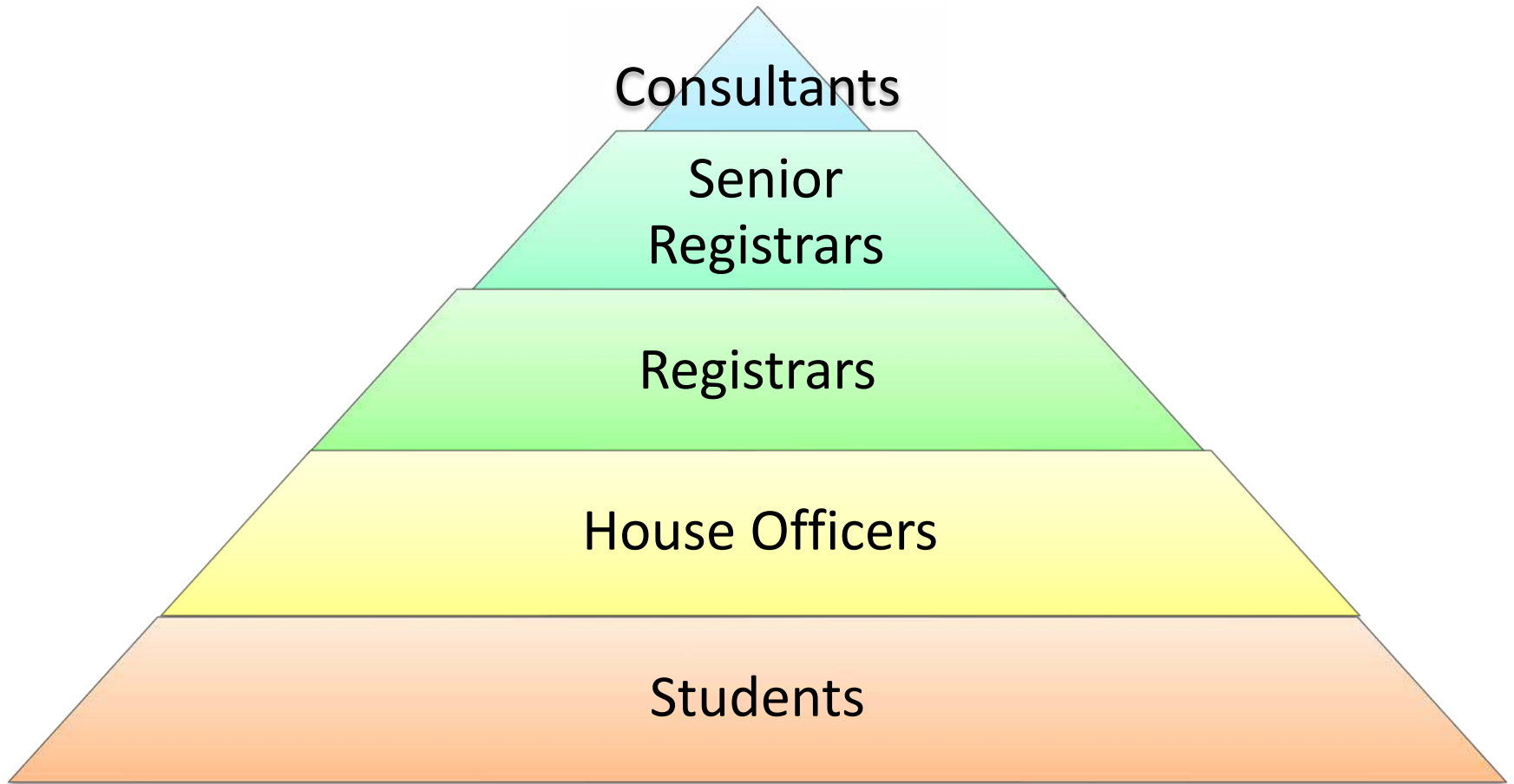
- *Endoscopic surgery* is a form of *minimally invasive surgeries* where small incisions are made to use miniaturized instruments to perform surgeries



Structure of surgery department



Departmental Organogram



Surgical Postings

- *Surgery I*: Introduction to surgery. Mainly through general surgery
- *Surgery II*: Postings through surgical subspecialties
- *Special Posting*: Postings in departments allied to surgeries
- *Surgery III*: Revision posting
- Department dues for each posting is ₦300

Surgical Postings

- *Students are distributed into general surgery firms or special posting groups*
- *Each firm has different schedules.*
- *But most schedules consists of:*
 - *Ward Rounds*
 - *Outpatients*
 - *Surgical procedures in the theaters*
 - *Call duties in Accident and emergency wards*
 - *Student presentations and seminars*

Student assessments

- Two ways
 - i. Continuous assessments
 - ii. Final Year Examinations

Student assessments

- Continuous assessments
- Makes 30% of students overall assessment
- Spans S1 to S3
- Include the following:
 - i. Attendance
 - ii. End of posting Examinations
 - iii. Mock Final year examination

Student assessments

- Attendance
 - Very important
 - Must make at least 75% of attendance to sit for exam
 - Consists of attendance at *all* departmental and units' activities
 - Monitored by means of departmental log books, which each student must have

Student assessments

- Surgery Department logbooks
 - Each student must have one
 - This must be purchase at the beginning of S1 posting.
 - The same one is used for S2 and S3
 - It must not be lost!
 - Do not give it to others to submit for you. This is examination fraud.

Some Rules

- Students must be in the hospital by 7:30 am
- Students must respect the personnel above them in the organogram
- They must also respect other health professionals in the hospitals

Rules

- Above all, empathize with patients. Show them
 - Respect
 - Courtesy
- Be
- Patient!! with them



The Post and Courier / Mic Smith

Rules: Dressing

- Modest Dressing
- In Ward Cloths
- Have your name tags



Do's of grooming

Acceptable Beards



Don'ts of grooming

Unacceptable beards



Hijab

Accetable



Unacceptable



Don'ts of dressing



Rules: Theater

- This is a very special place
- It has its own mode of dressing
- Its own codes of conduct which is designed to reduce the possibilities of infections



Surgical Postings: Time table

Days	Time	Departmental Activities
Mondays	8am-9am	Morning reviews
Wednesdays	3pm-5pm	Departmental seminars
Everyday except Mondays	8am-10am	Lectures
Everyday except Wednesdays	3pm-5pm	Lectures
Everyday including weekends	5pm to 8pm	Call duties in the Accident and Emergency Department

Venues of departmental activities

Activities	Venues
Seminars and Morning Reviews	Pathology Seminar room
Lectures	<ul style="list-style-type: none">• Pathology Seminar room• Theatre Lecture room• Mortuary Lecture room• Admin Block seminar room (Rarely)
Operative procedures	Theatre
Clinics	Consultant Outpatient Building
Ward rounds	Wards
Call duties	Accident and Emergency Ward

Essential places

- Wards



Essential places

- Outpatient Department



Essential places

- Accident and Emergency



Essential places

- Library



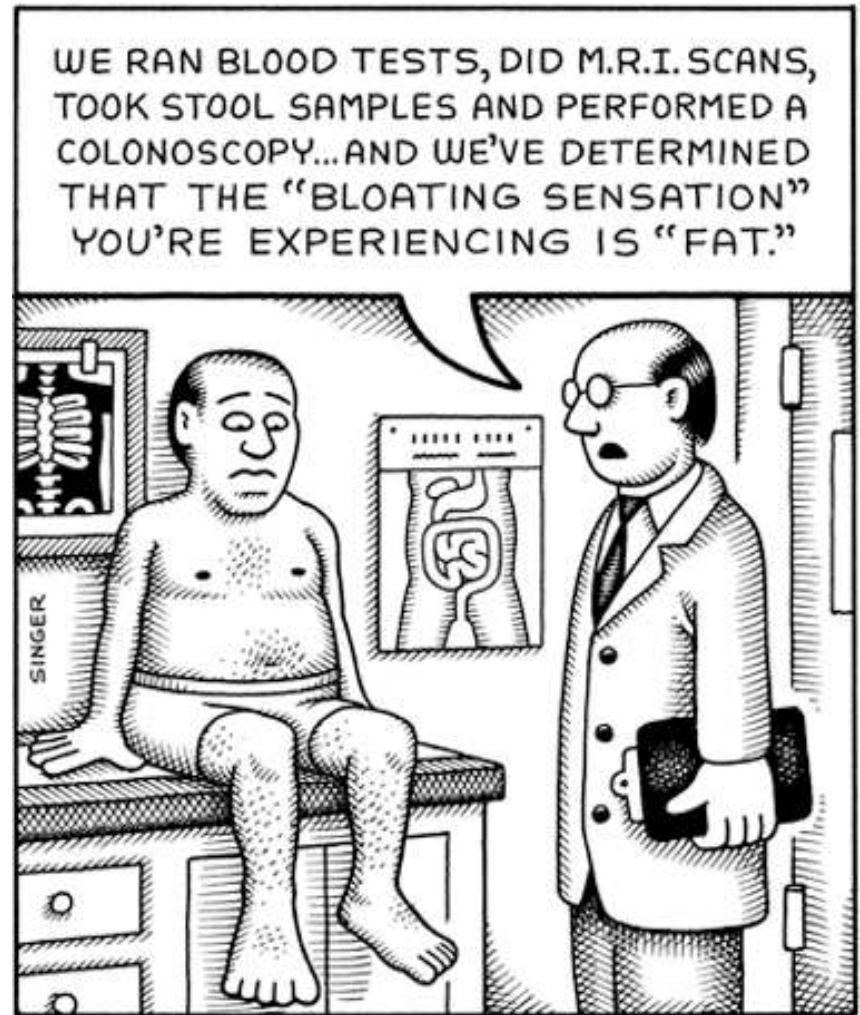
Essential places

- Operating Theater



Making Diagnosis

- Taking History
- Examination of the patient
- Taking Investigations



Making Diagnosis

Involves three main processes:

- **History Taking**

Process of communication by which information is obtained from patients for the clinical diagnosis of their illnesses.

- **Physical Examination**

Process of communication by which signs are elicited in patients for the clinical diagnosis of their illnesses

- **Investigation**

The use of instruments and tests to obtain information to arrive at patients' diagnosis

Making Diagnosis

- The process of taking history and examining the patient is called *Clerking*



Some advice

- Learn to love the hospital
- It's going to be your laboratory and classroom



Some advice

- Make sure that you clerk and present at least one patient per week
- Attend all lectures
- Attend all ward rounds
- Attend all clinics



Penalties

- A student who fails to attend up to 75% of departmental activities will not be allowed to sit for examinations
- A student who is improperly dressed will not be allowed to take part in departmental activities
- A student who is late to the departmental activity may be sent out or otherwise punished

Surgery is life

- Winning is overrated. The only time it is really important is in surgery and war.”

Al McGuire

Welcome to surgery

- Surgery is the red flower that blooms among the leaves and thorns that are the rest of medicine.

Tradeu

Thank You

